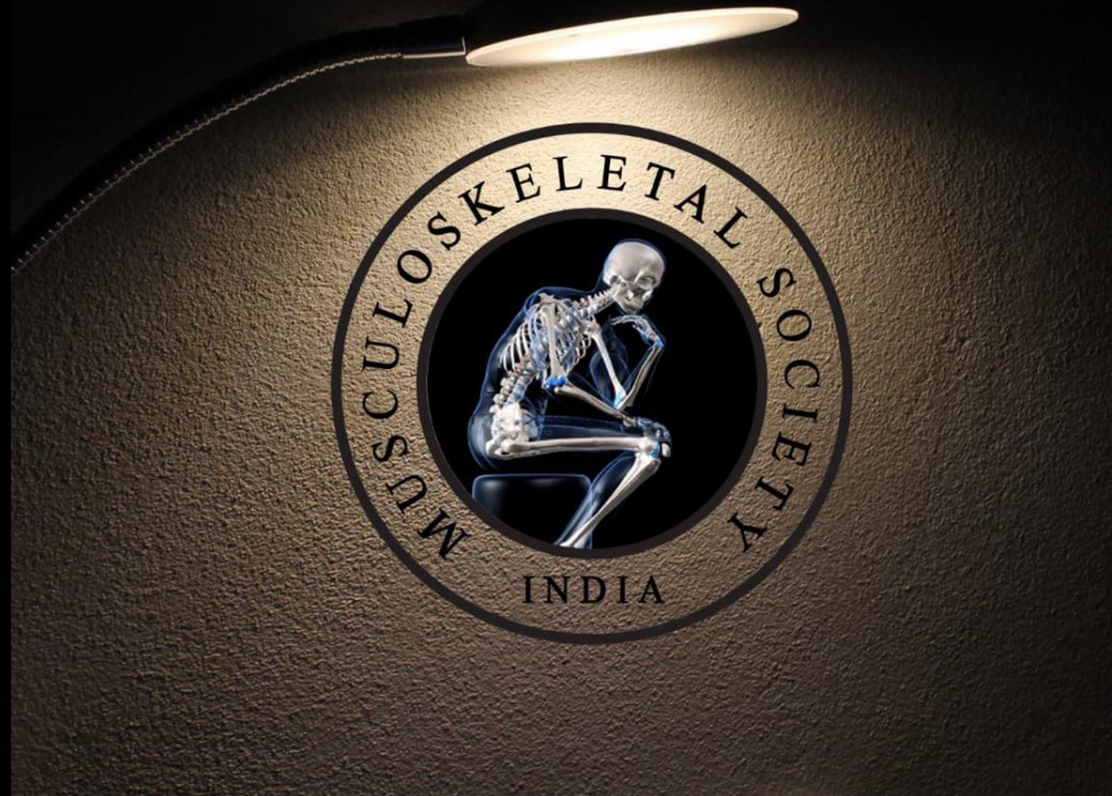


MICOD – 22/02/2024

Case contributor – DR. VIJINDER ARORA

MI-COD

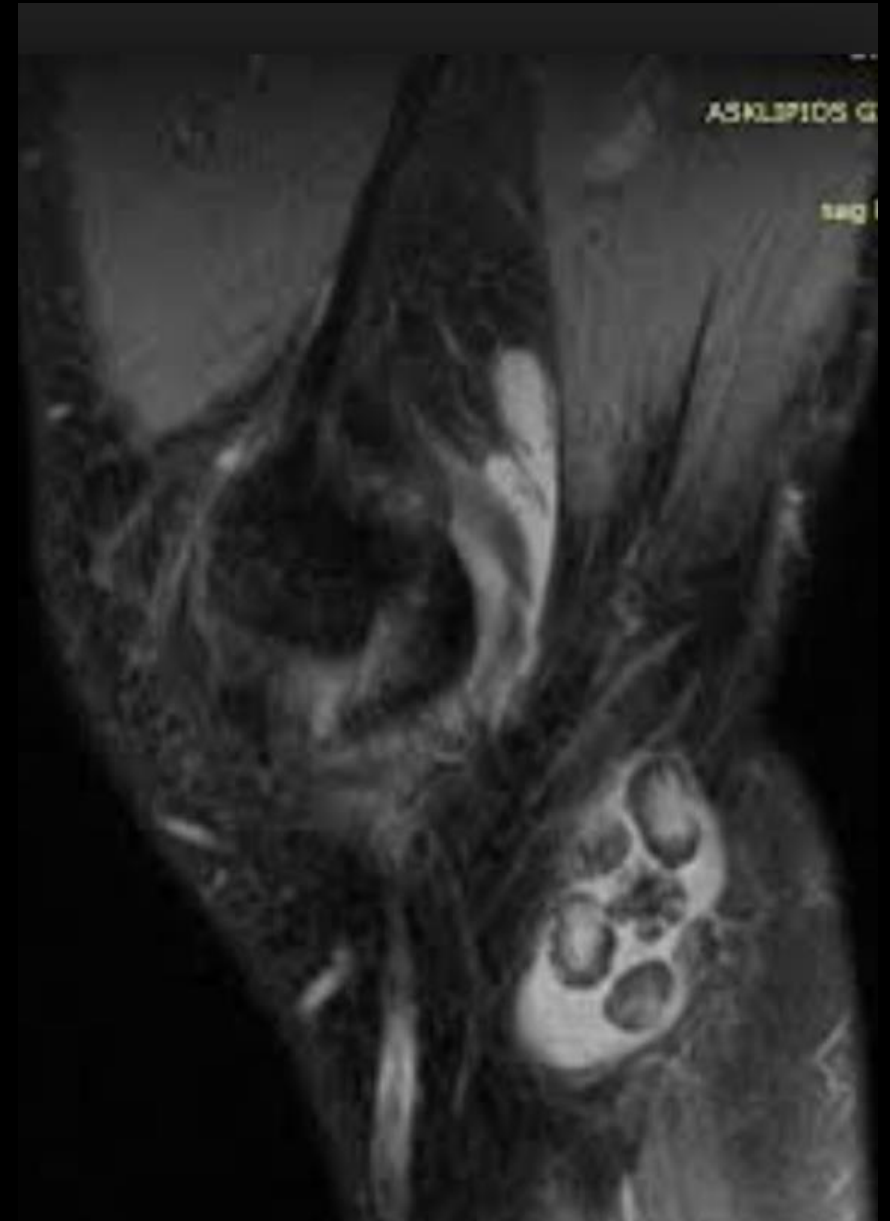
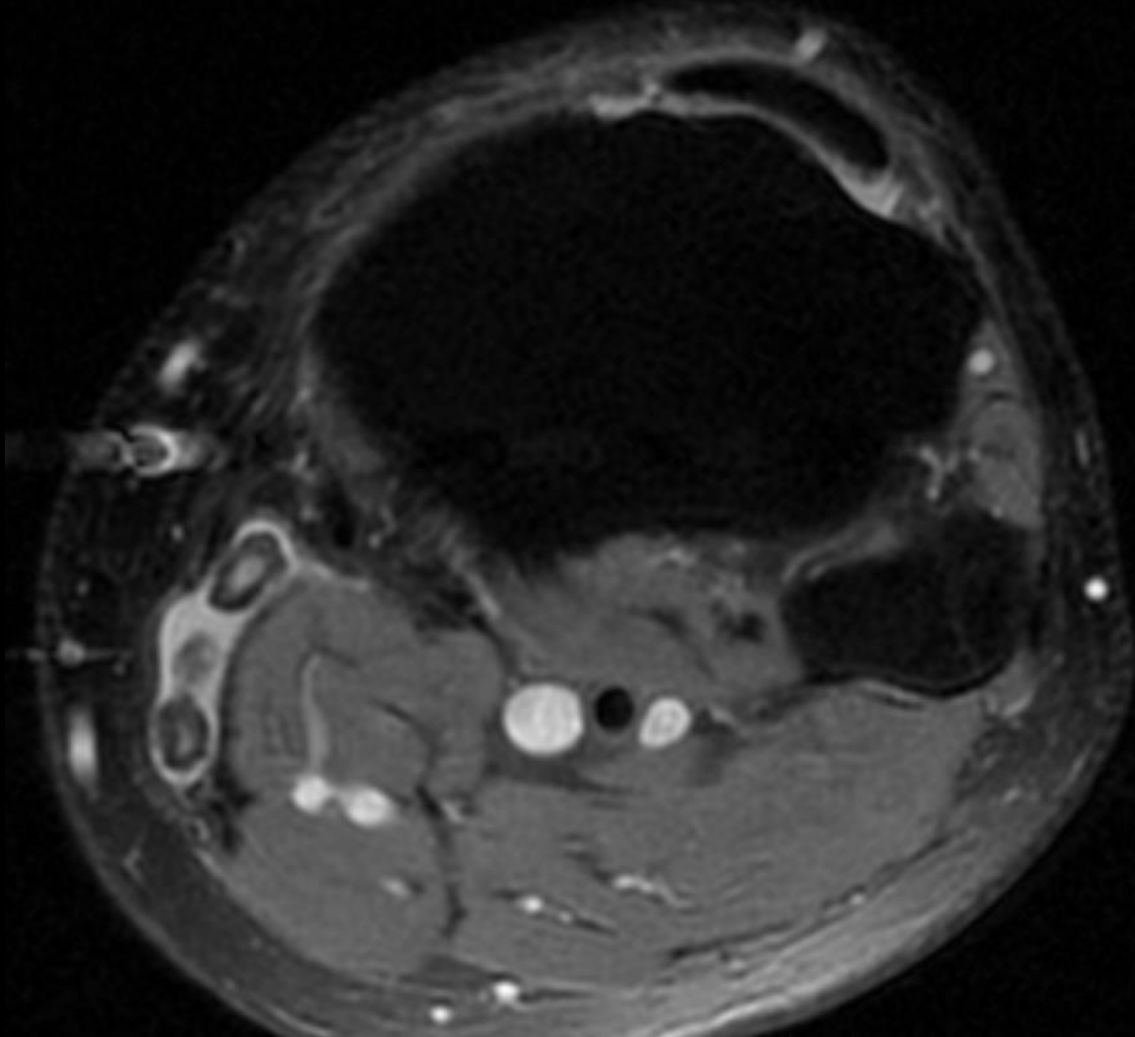
MSS INDIA- Case Of the Day



57 yrs old – pain and limitation of movement



Loose bodies in bakers cyst



BAKER'S CYST

- Baker's cyst is lined by synovium and is formed when joint fluid extends into the gastrocnemius-semimembranosus bursa.
- It may extend medial, lateral, deep or superficial to the muscles.
- Presence of haemorrhage, loose bodies or debris within the cyst is not rare.