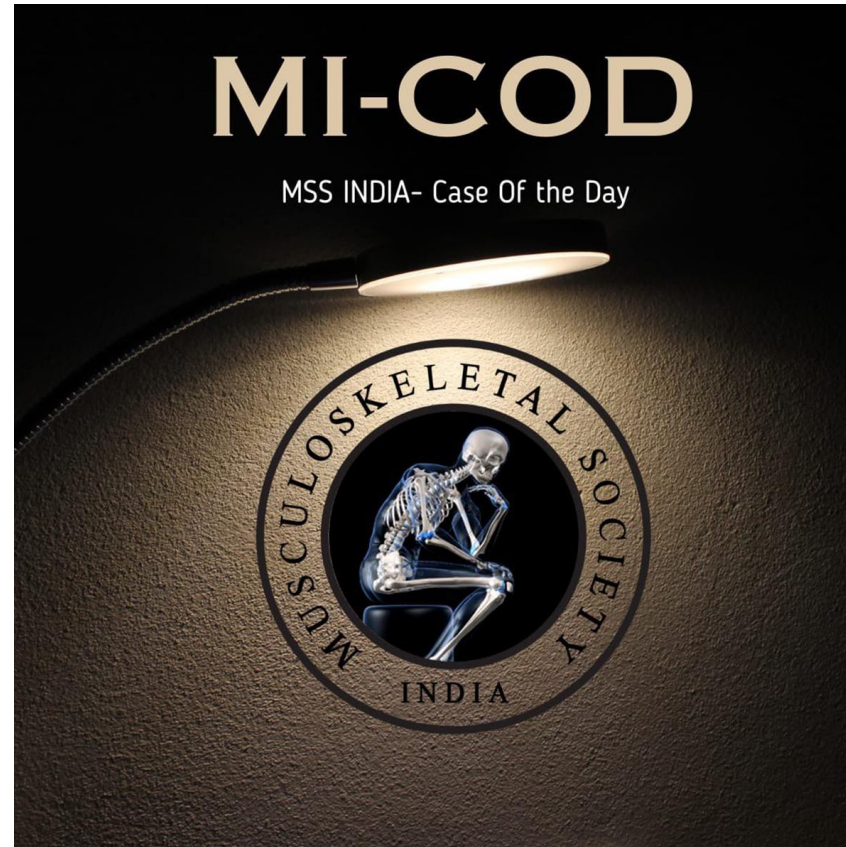


MICOD -30/08/2023

Case contributor – **Dr.Joban Babhulkar**

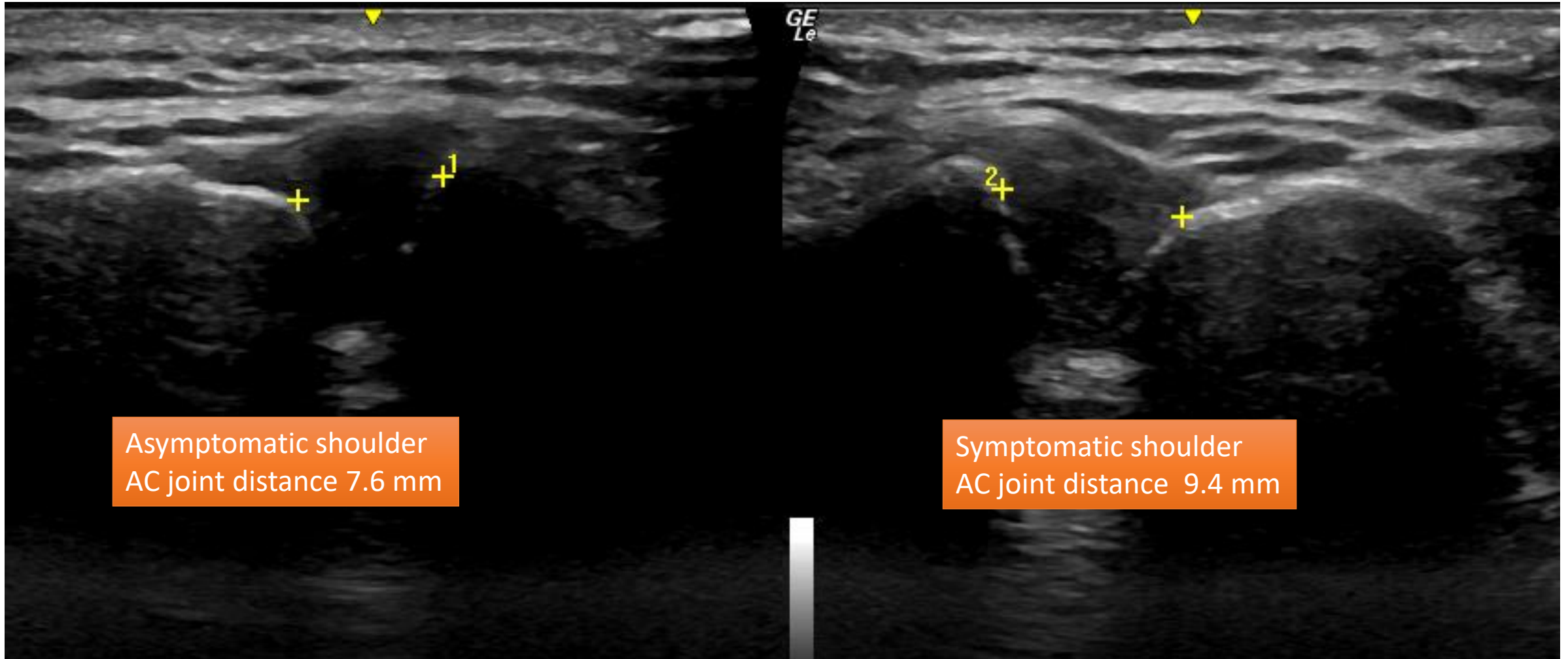


58 y/o man was on conservative management for fracture lateral end of clavicle.

Has severe pain on shoulder movement 6 weeks post injury

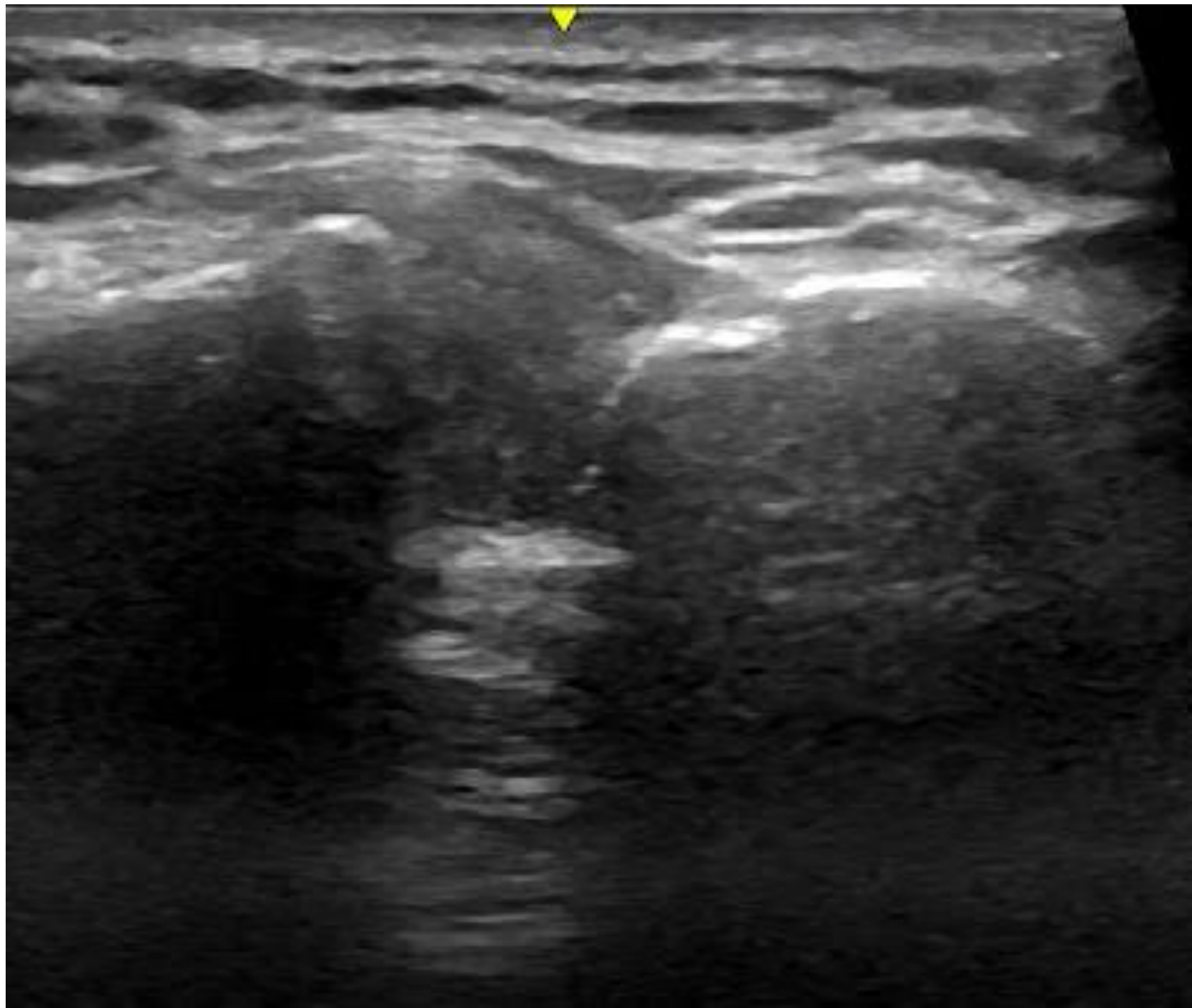
Zanca view 6 weeks after injury





Asymptomatic shoulder
AC joint distance 7.6 mm

Symptomatic shoulder
AC joint distance 9.4 mm



Questions

Grade of injury to AC joint ?

Nature of instability

Any possible ligament injury ?

Usual management?