

**MICOD 19/09/2023**

**Case Courtesy: Dr. Pushpa B. T (Ganga Hospital, Coimbatore)**

# MI-COD

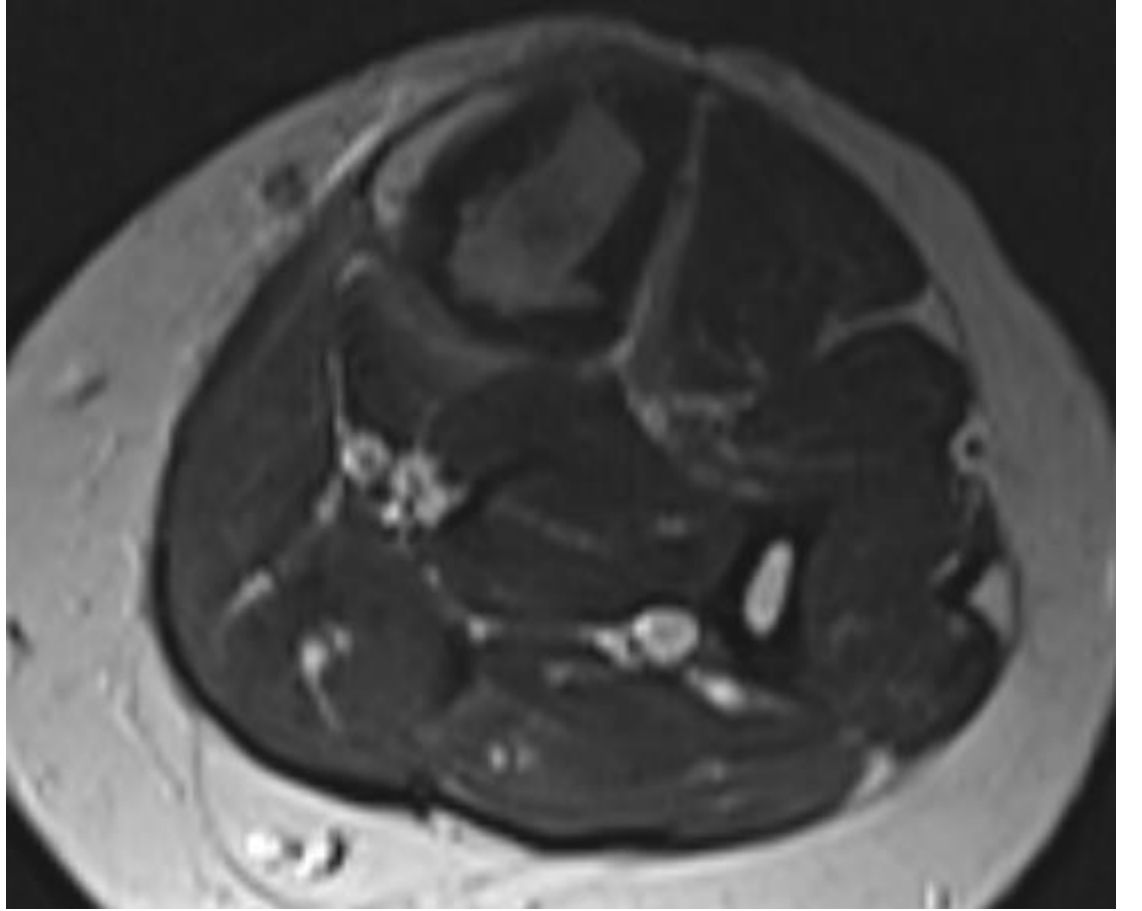
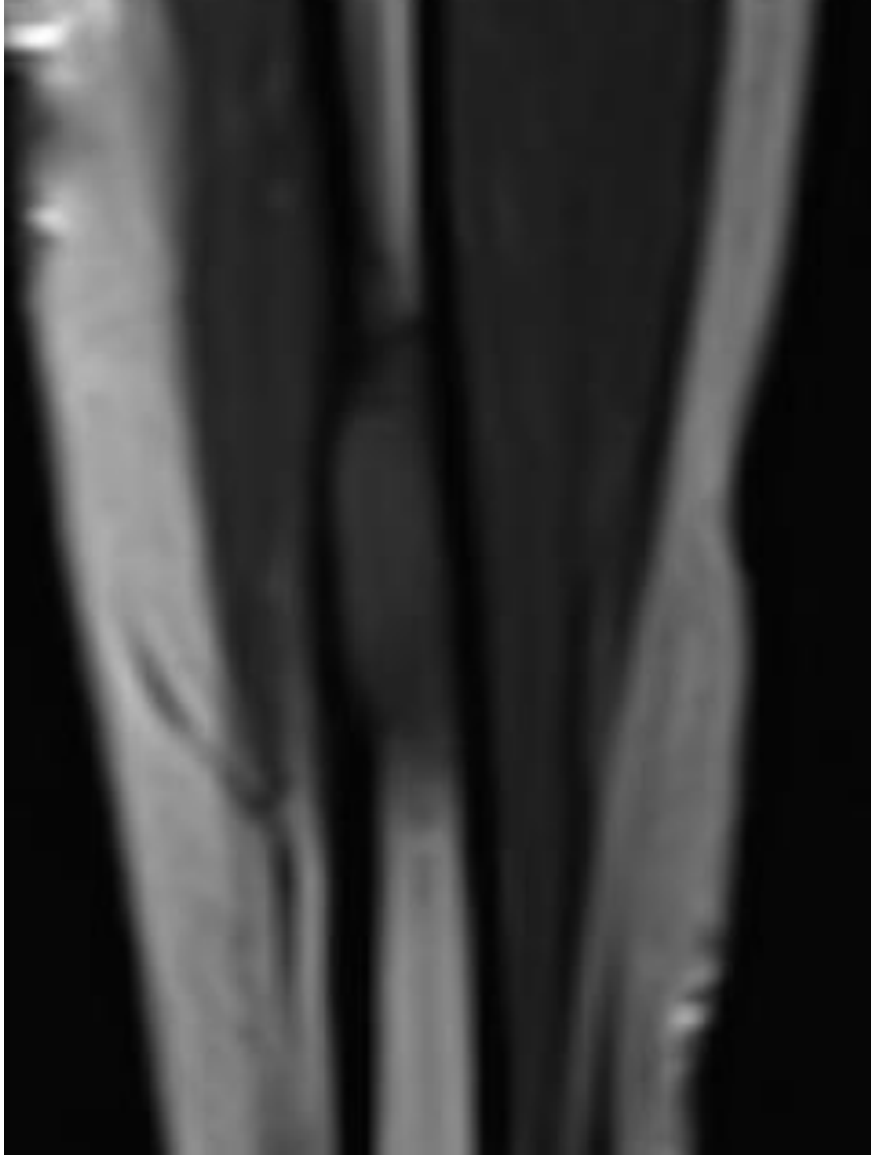
MSS INDIA- Case Of the Day

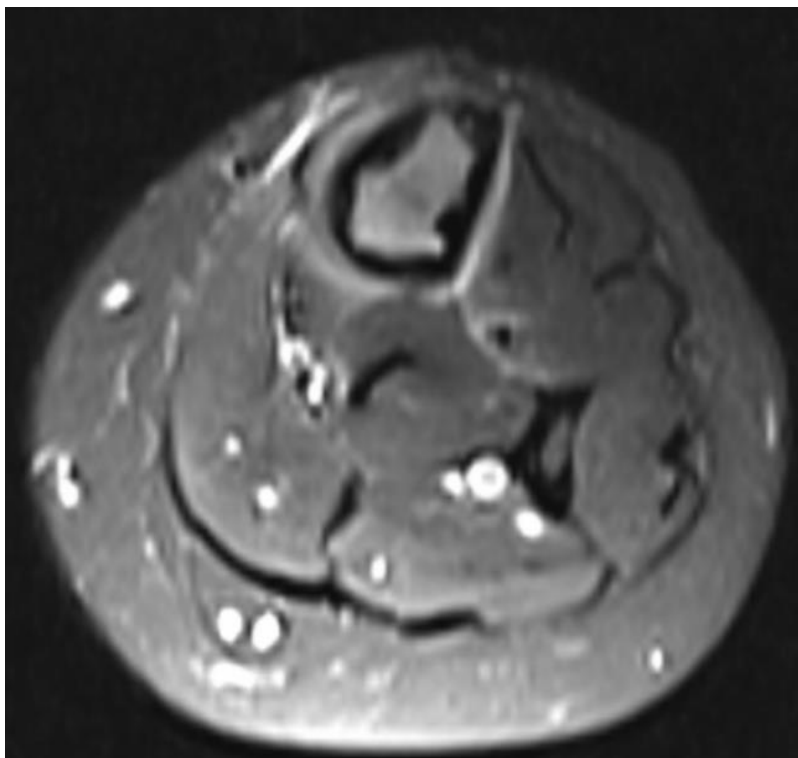
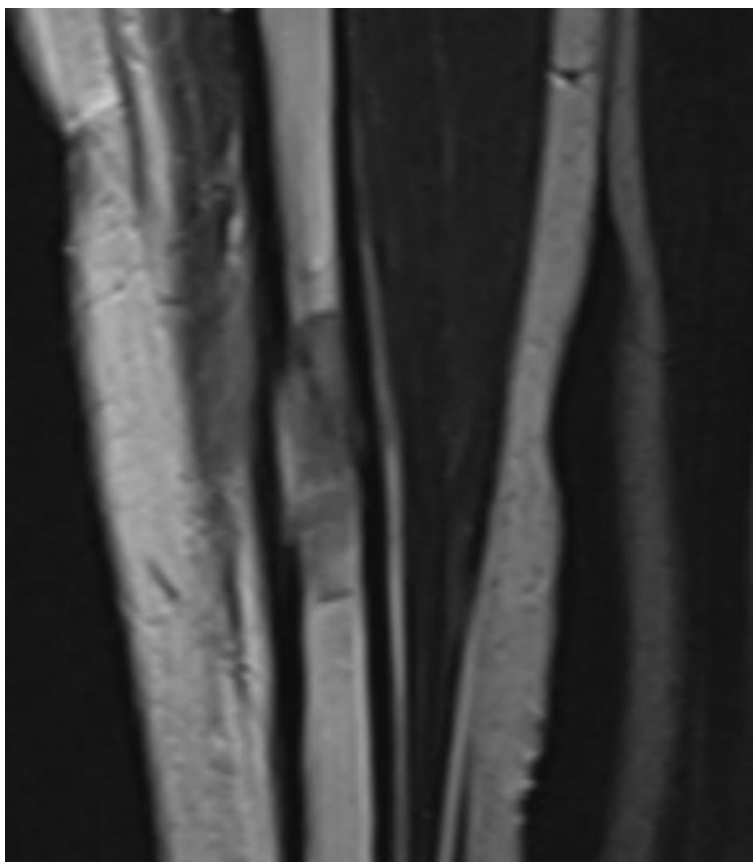


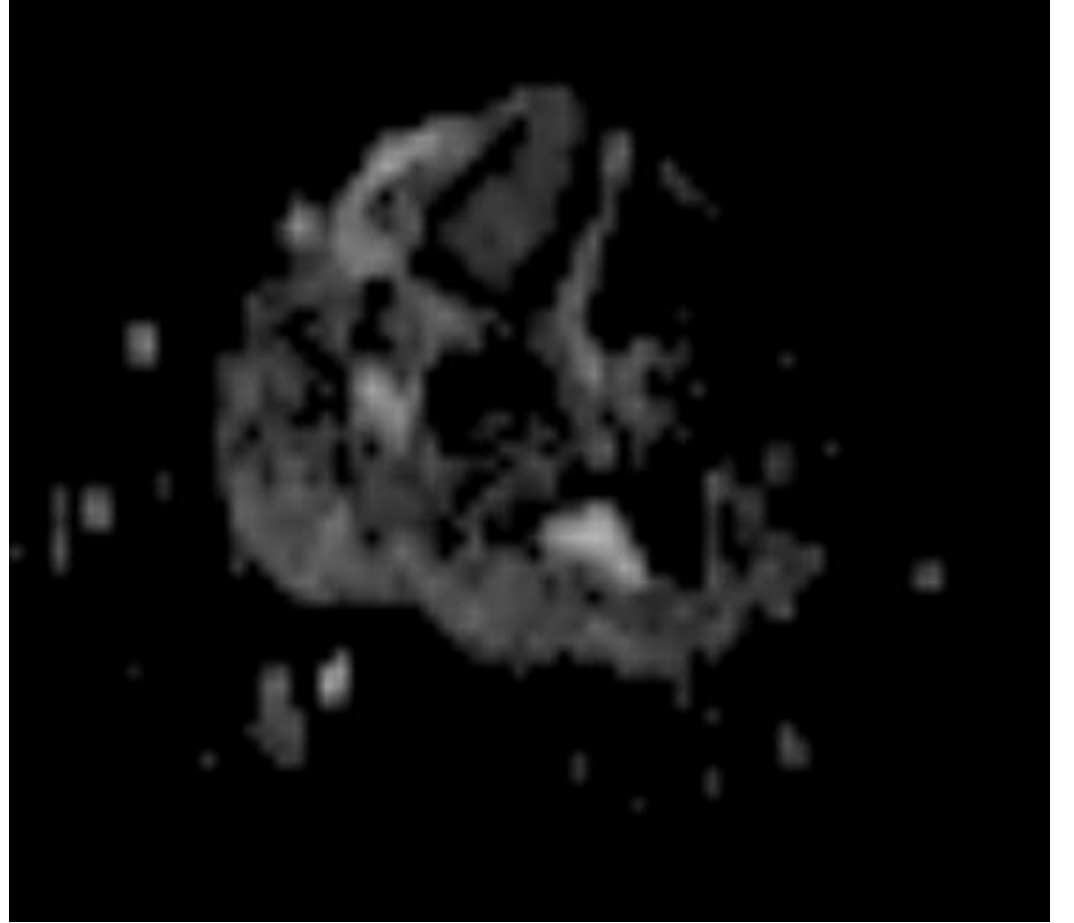
# Clinical details

- A 24-year-old female patient presented with complaints of gradually progressive, dull aching, pain in the left leg for two months, which got aggravated on walking.
- Local examination revealed tenderness over the distal leg with no local rise of temperature. Range of movements was normal and distal pulses were felt.

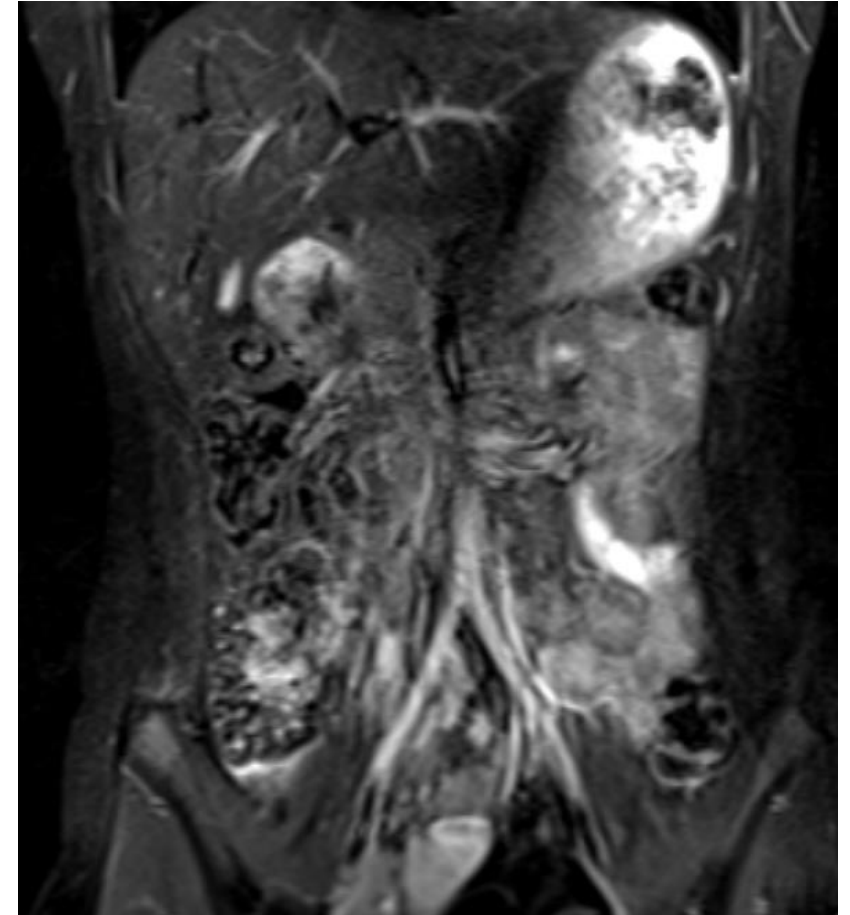
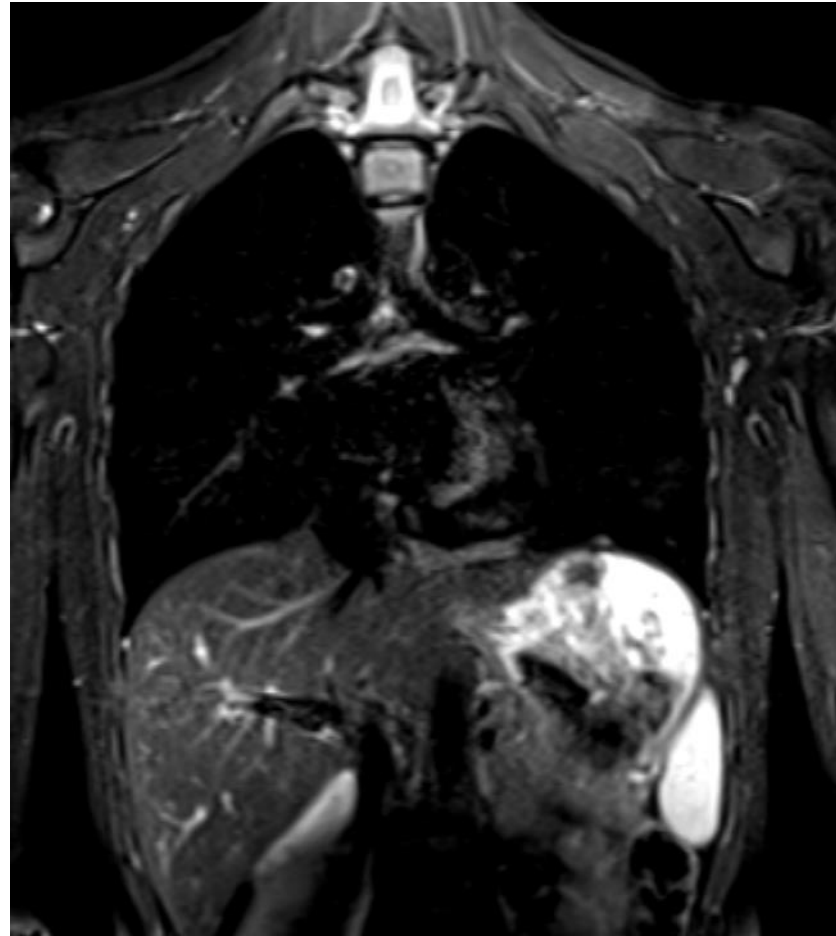








Clue – whole body MRI was done to look for synchronous lesions



Whole-body MRI revealed no synchronous involvement of other systems.