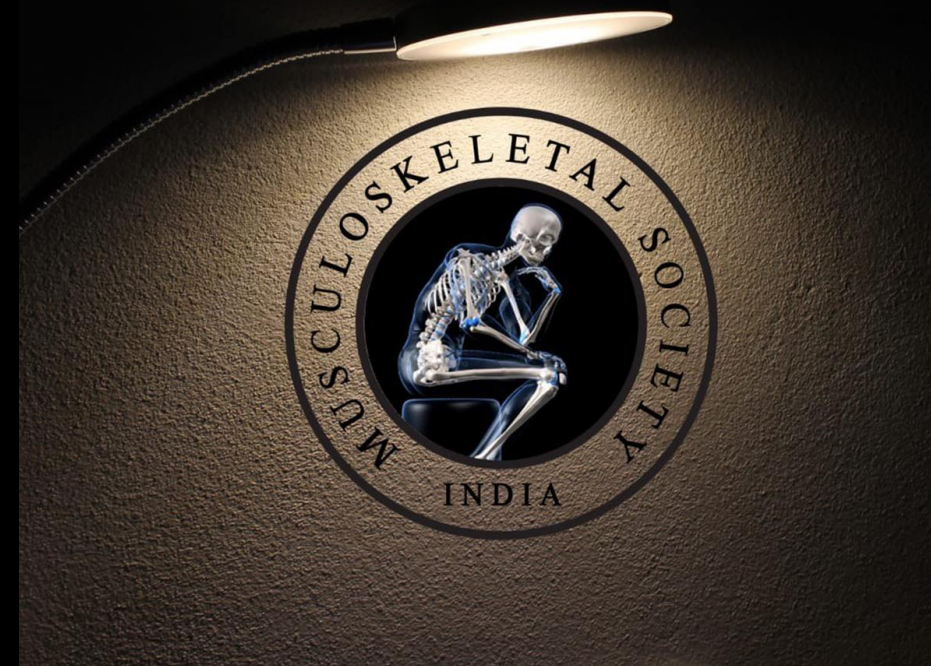


MICOD –03/09/2024

Case contributor – Dr. Karan Asthana.

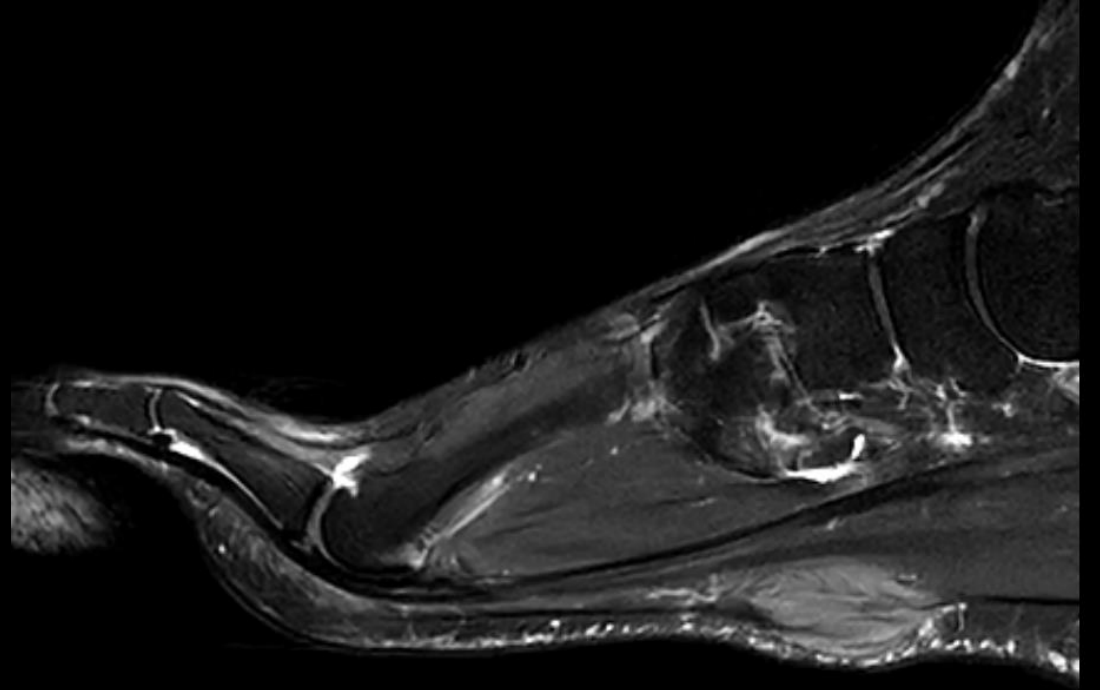
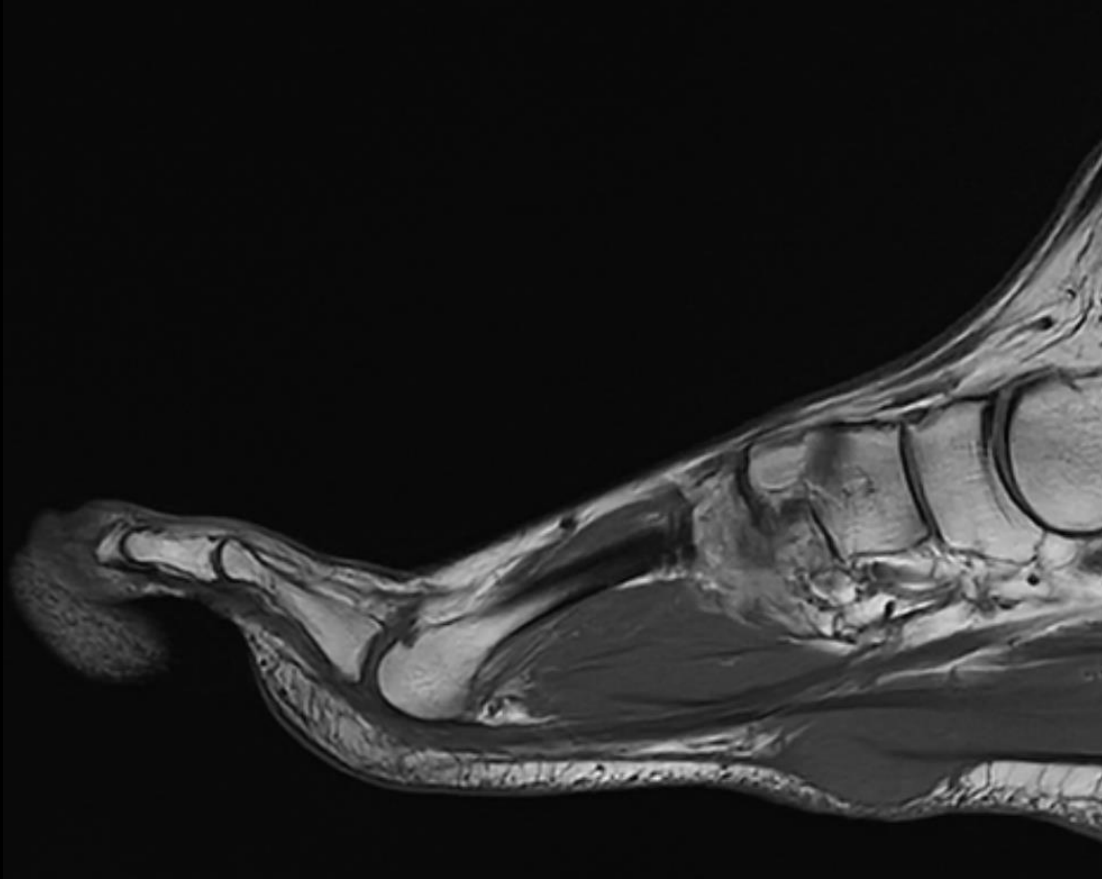
MI-COD

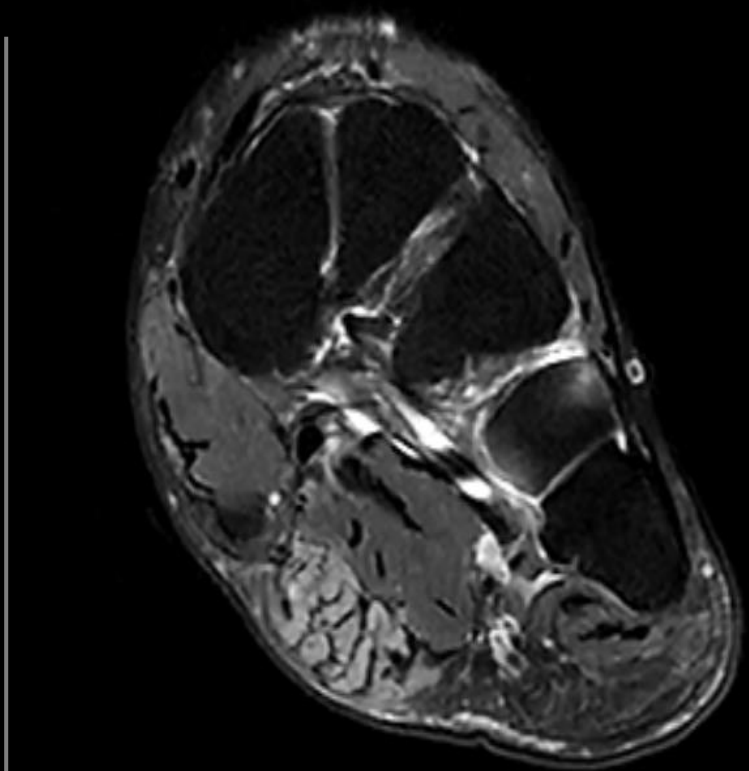
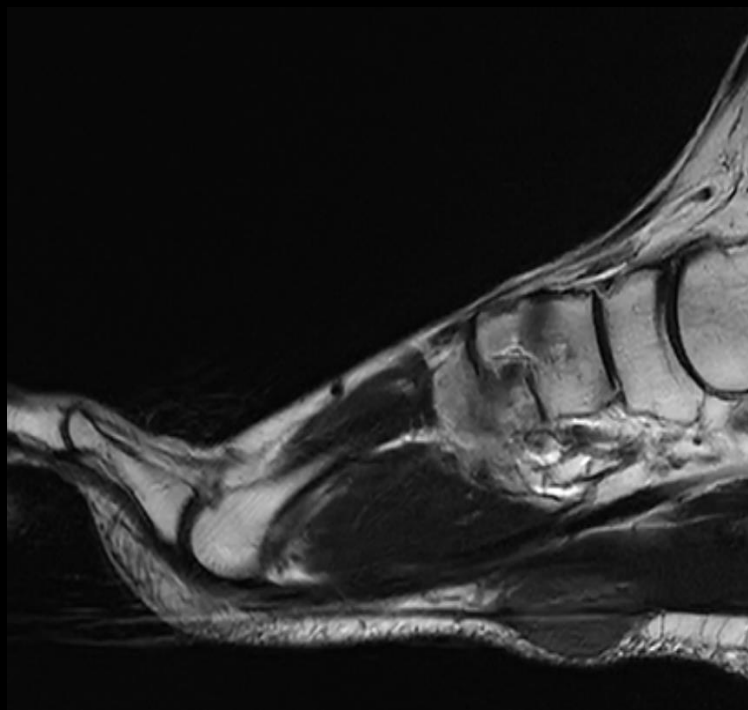
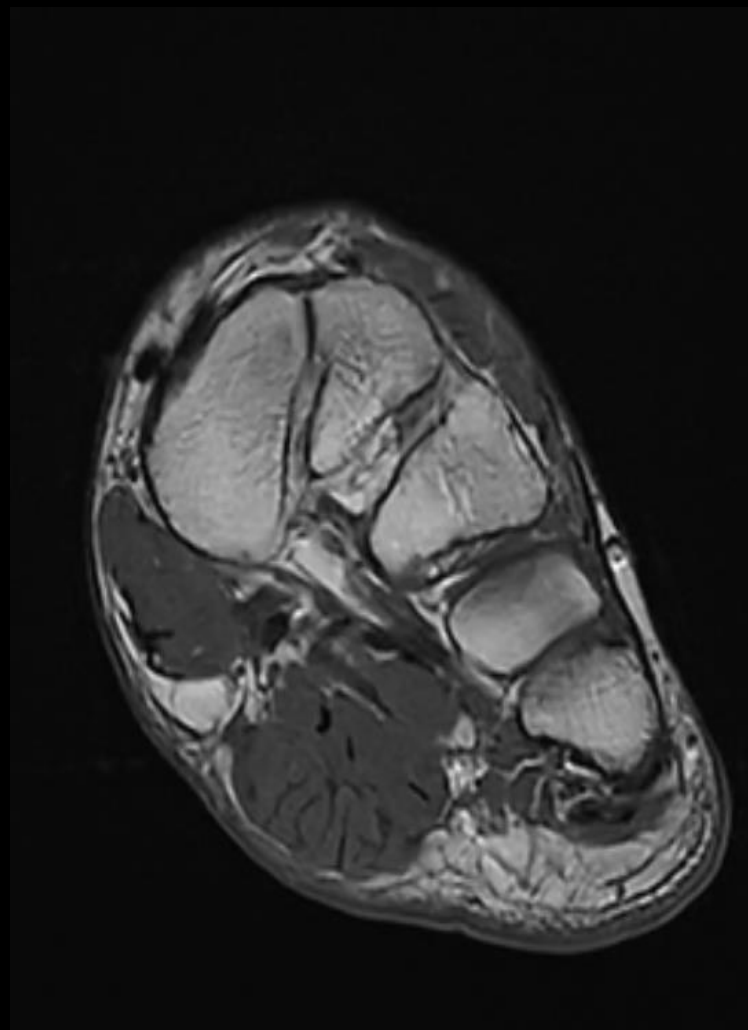
MSS INDIA- Case Of the Day





48 YRS / M WITH SWELLING IN
THE MID PORTION OF LEFT
FOOT







ANSWER-

PLANTAR
FIBROMATOSIS.

PLANTAR FIBROMATOSIS

➤ **Plantar fibromatosis** also known as **Ledderhose disease**, refers to a benign fibroblastic proliferation of the plantar fascia. It is classified as a type of musculoskeletal fibromatosis.

---Plantar fibromatosis is associated with other fibroproliferative disorders such as:

- Dupuytren disease (also known as palmar fibromatosis): seen in ~40% (range 10-65%) of patients.
- Keloids.
- Peyronie disease.

Ultrasound

- Often seen as a hypo to mixed echogenicity, discrete, fusiform, multinodular thickening of the plantar fascia located separately to the calcaneal insertion.
- Most (~90%) do not demonstrate intrinsic vascularity on Doppler ultrasound.

MRI

- Typically relatively well-defined region of fusiform or multinodular thickening of the plantar fascia, not involving the calcaneal origin
- **T1**: iso to low signal compared with muscle.
- **T2**: low to intermediate signal compared with muscle.
- **T1 C+ (Gd)**: demonstrates variable contrast enhancement.

• THANK YOU

