

MICOD - 06/05/24

Case contributor – Dr. Sonal Saran

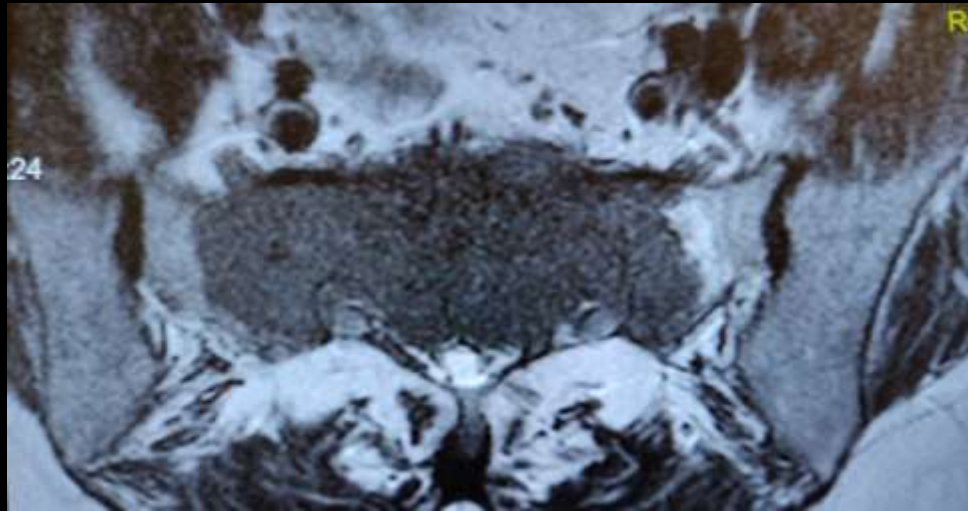
# MI-COD

MSS INDIA- Case Of the Day



45 year old female with pain in lower back





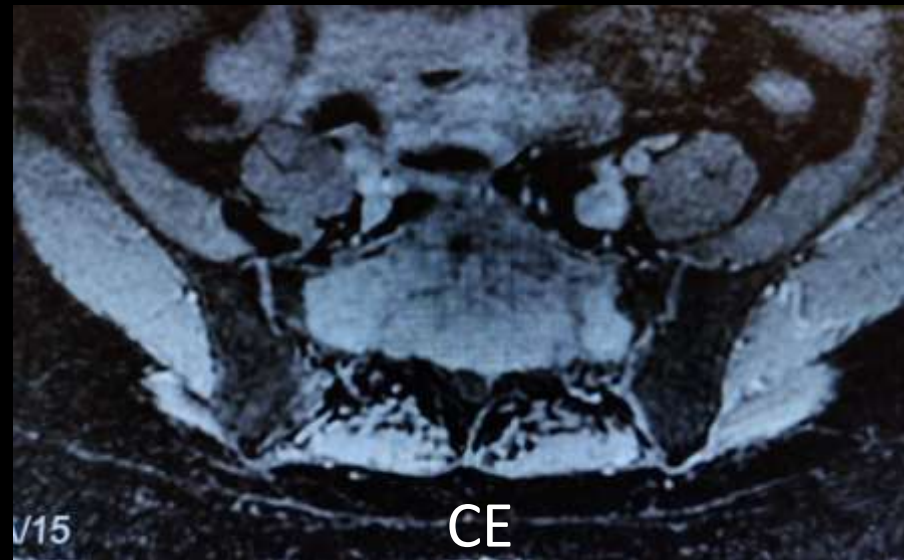
T2



T1



DWI



CE





# Plasmacytoma

**Specimen sent:** CT guided biopsy from S1 S2 vertebrae

**Clinical Diagnosis:**

**Gross:**

Received multiple brown black soft tissue pieces altogether measuring 0.7 x 0.5 x 0.3 cm. All embedded as A1.

**Report:**

Sections examined shows multiple tissue bits showing blood clots and one bit showing aggregates of mature and immature plasma cells having eccentric nuclei with perinuclear hoff. Focal bits show bony tissue.

**Impression:** Plasma cell rich lesion.

**Note:** Immunohistochemistry for CD138, CD38, kappa, lambda, LCA, Ki67, CD68 to follow.

**Advice:** Clinicoradiological correlation is ascertain the diagnosis.