

MICOD – 29/08/2024

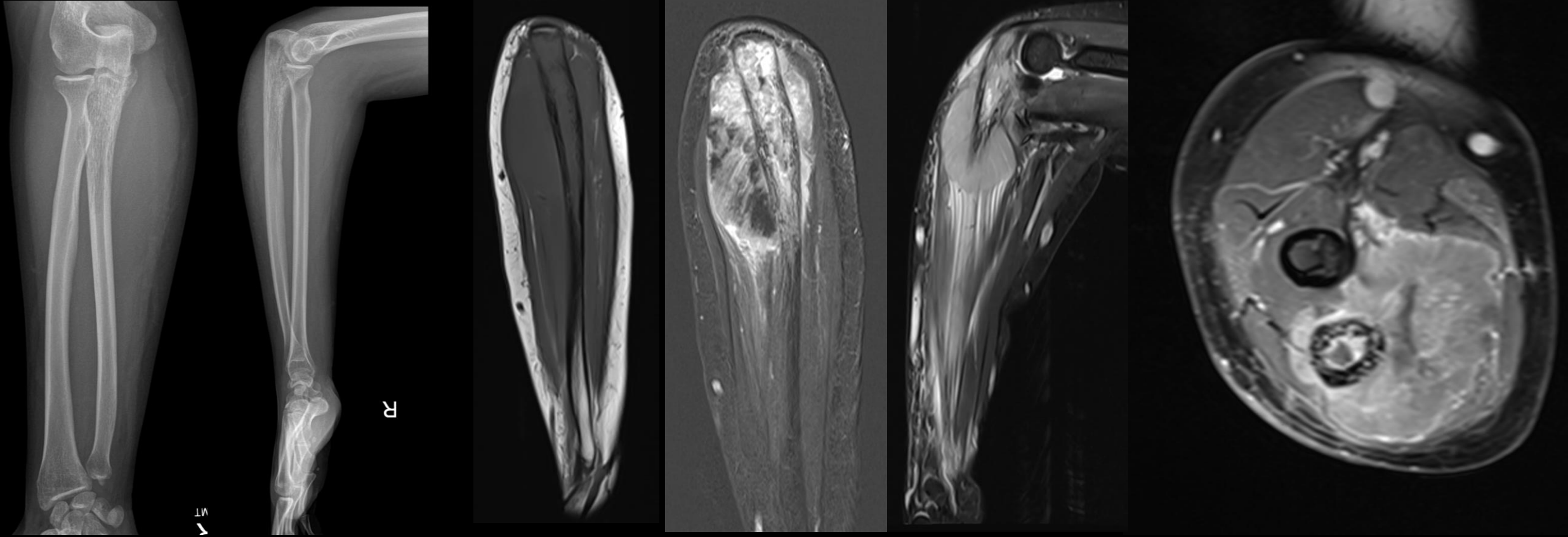
Case contributor – Dr. Uma Devi Murali Appavoo Reddy

MI-COD

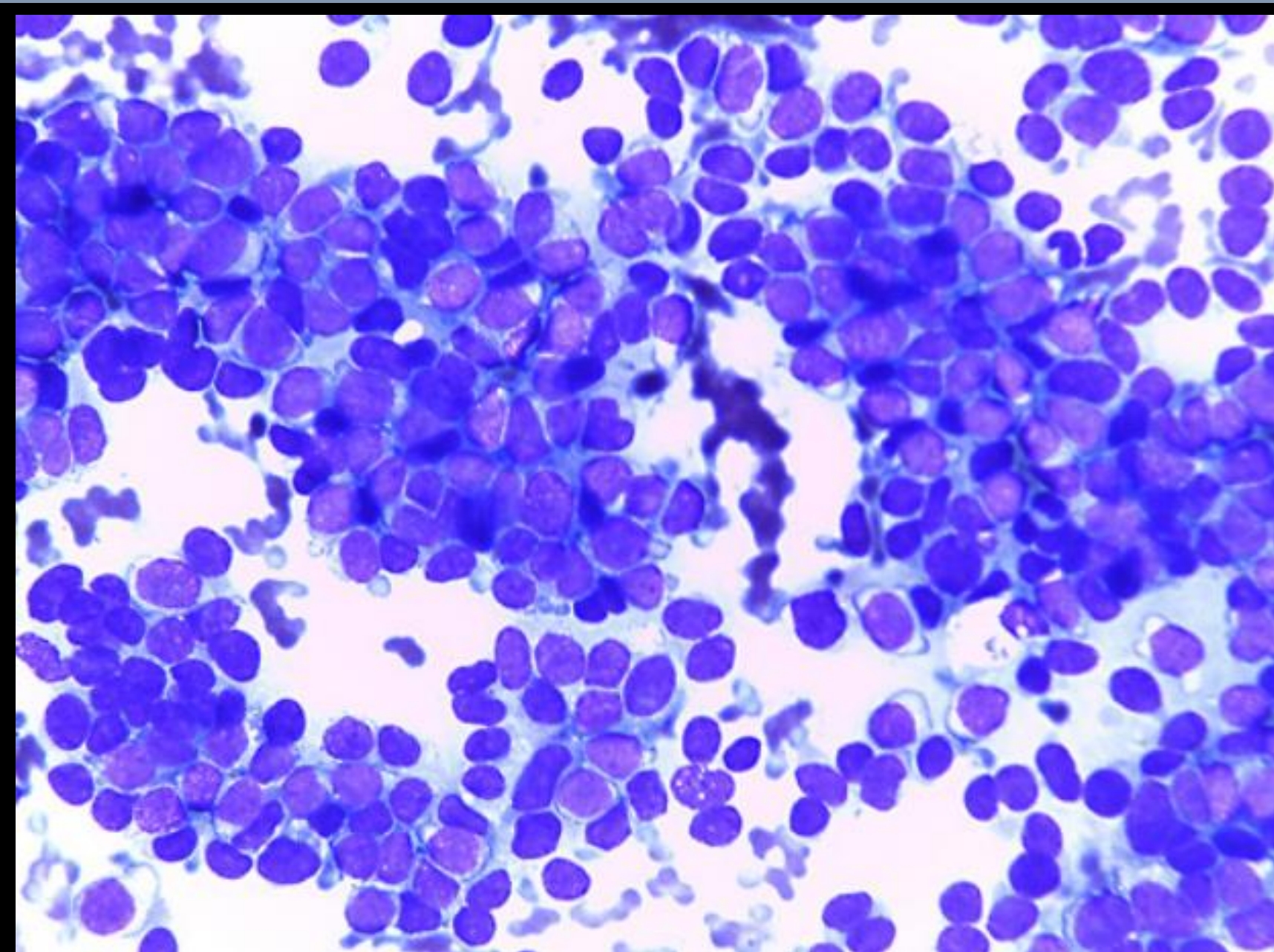
MSS INDIA- Case Of the Day



32-year-old, pain in right forearm for 2 years, recent onset of swelling & increased pain



Undifferentiated blue round cell tumor likely Ewing

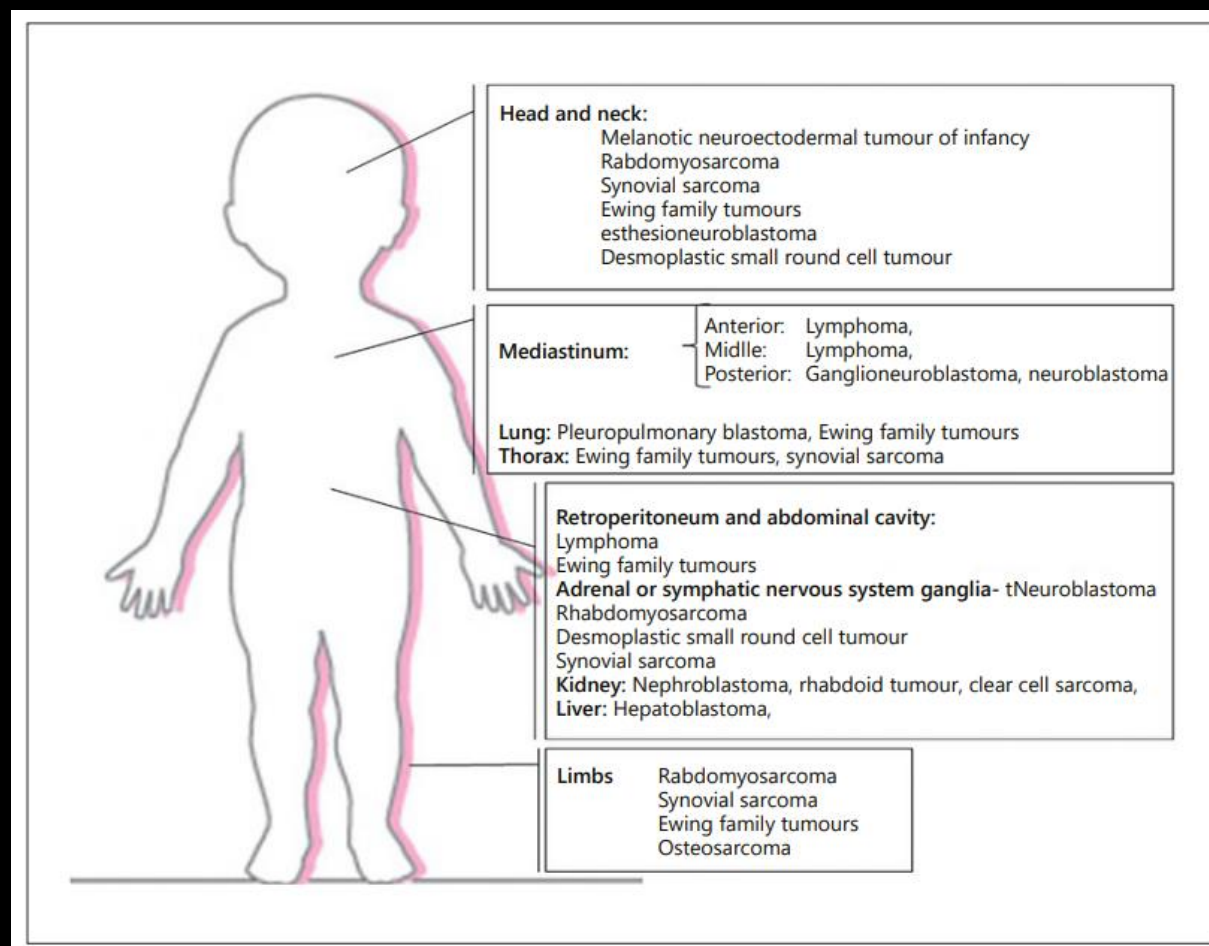
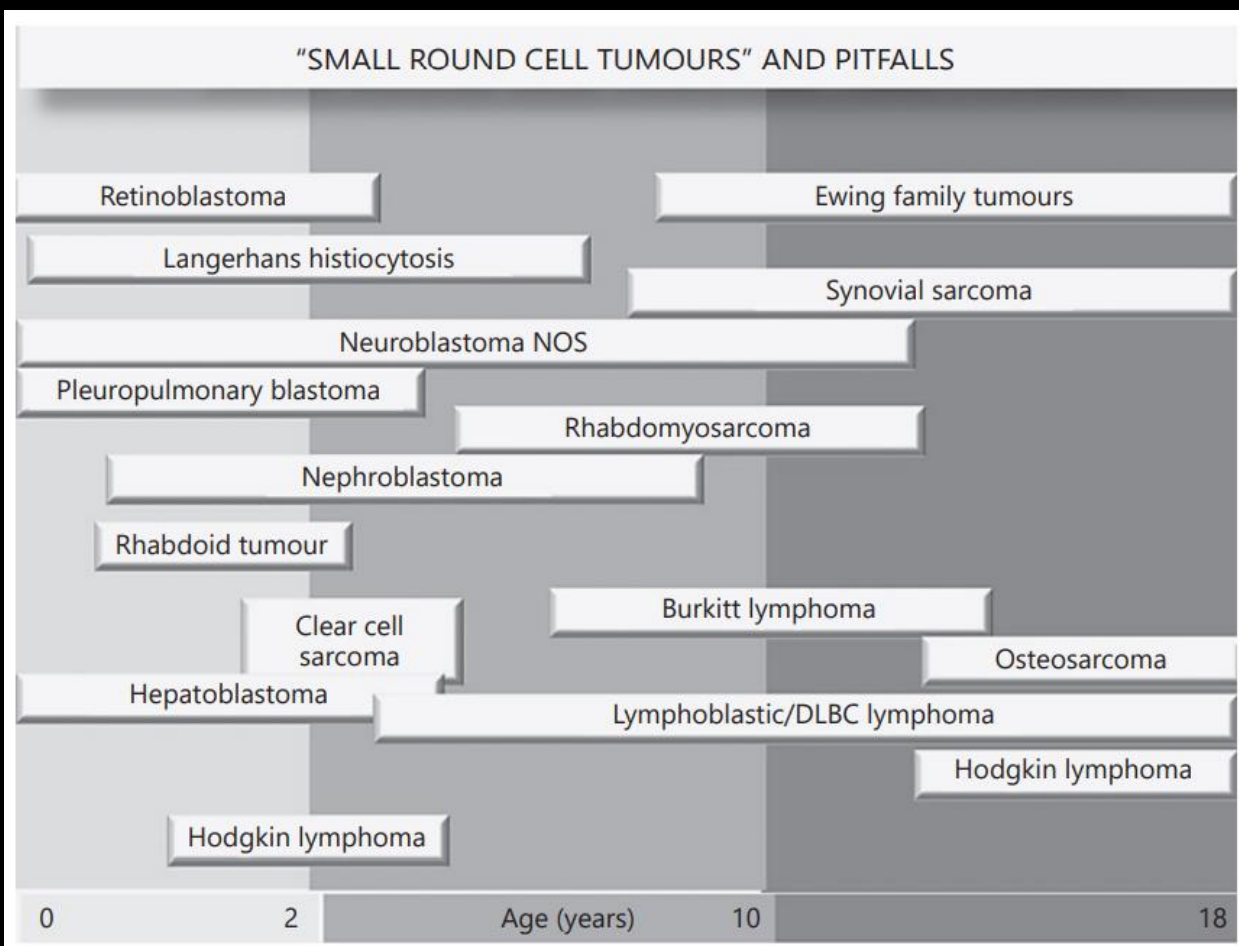


Fine-needle biopsy of an Ewing tumor (Giemsa, ×200)

The cytological pattern observed in Ewing's tumors is characterized by a monotone cellular population of light and darker cells, evident in Romanowsky's stains.

Small round cell tumors

A number of tumors share similar histology, composed of relatively uniform primitive small round blue cells. They also share many demographic, radiographic and clinical similarities.





Thank you

