

MICOD – 25/07/2024

Case contributor – Dr. Chinmay P. Mehta

MI-COD

MSS INDIA- Case Of the Day



N SERIES THE ENTRAPPED SERIES

#Happy Wedding Season



23-year-old cricketer with non united fracture. Trauma 14 months old.
He used to be a finger spinner but has now switched to a wrist leg spin.
What could be the possible etiologies?



alamy

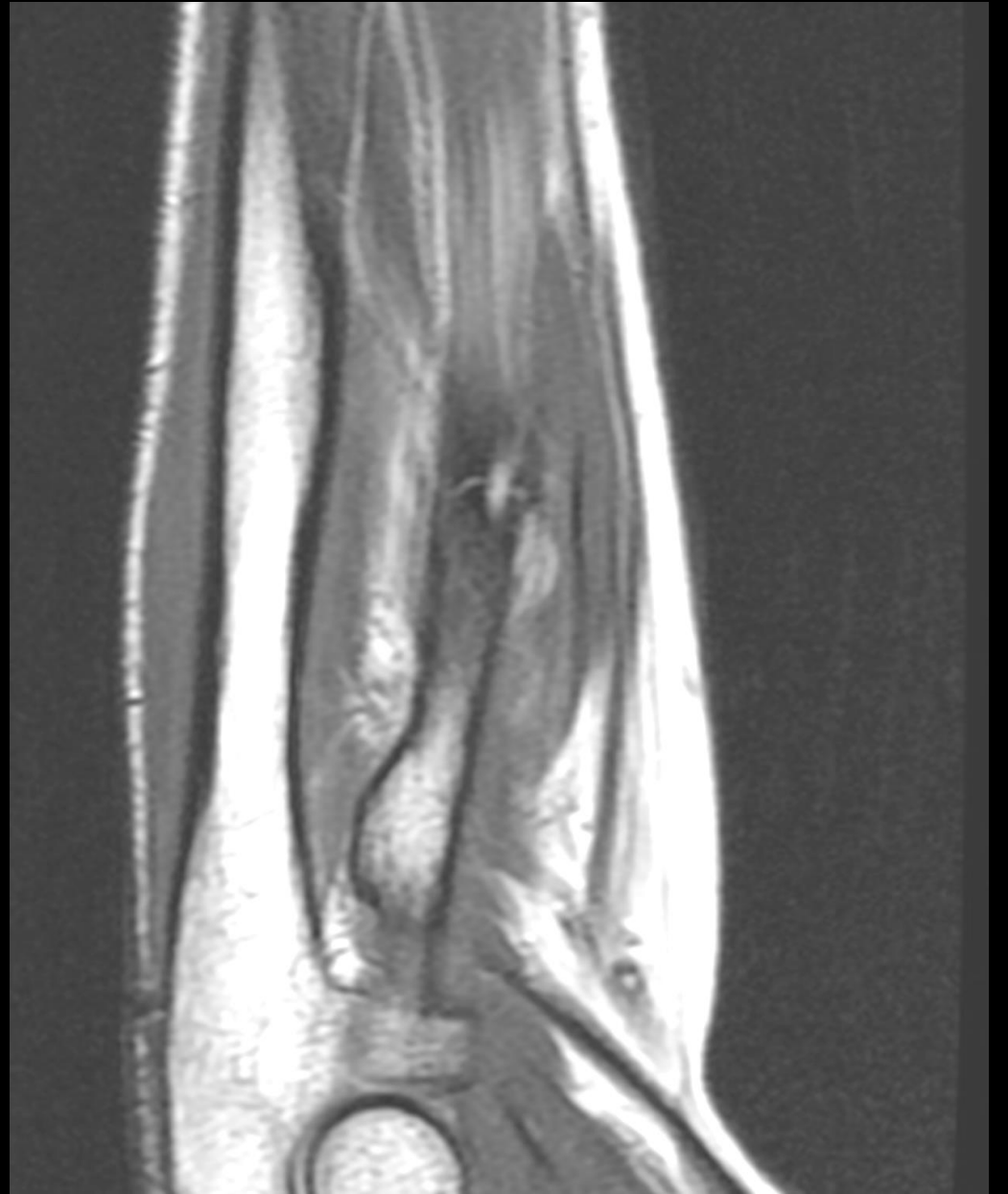
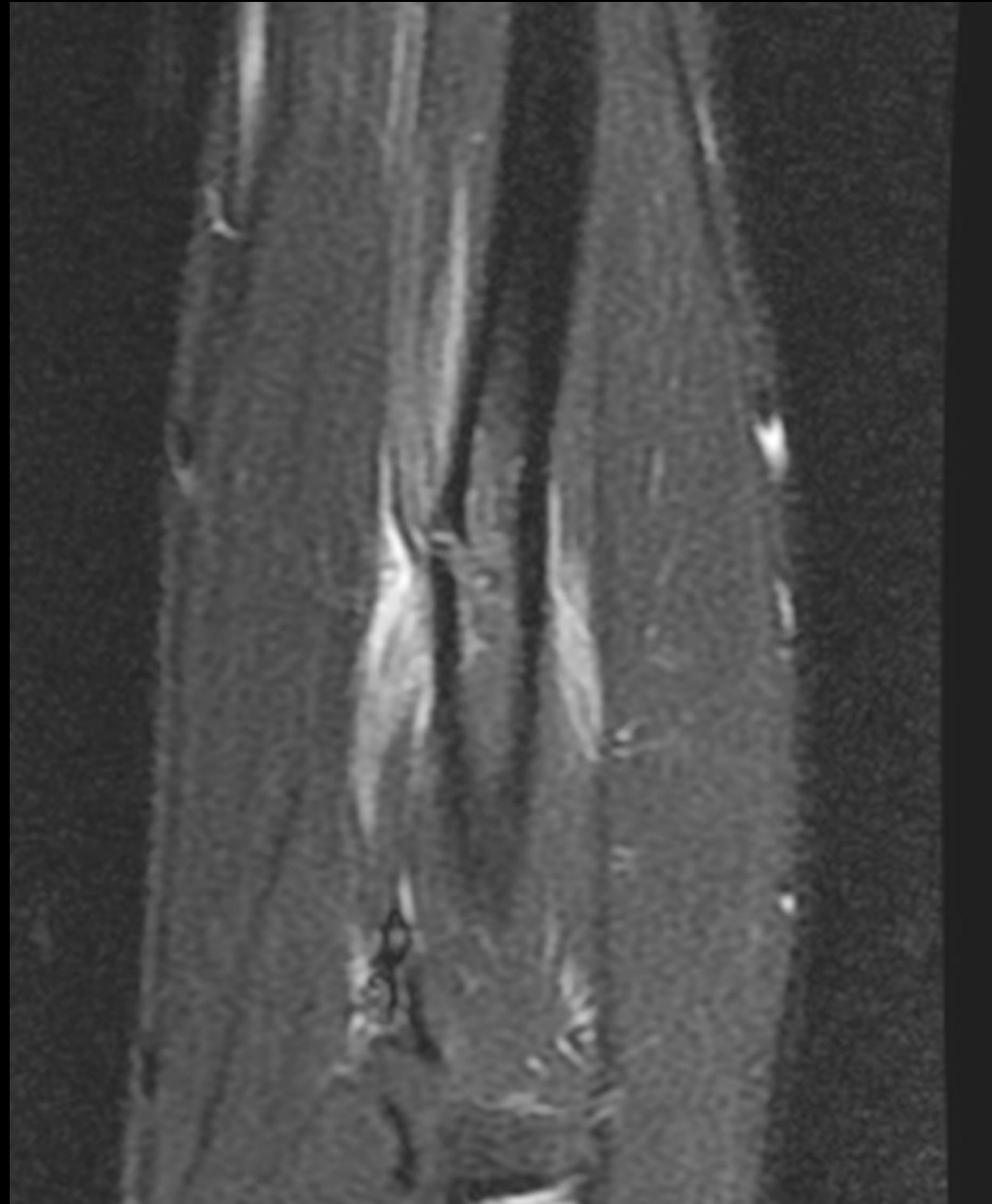
Image ID: GRIB03
www.alamy.com

R



gettyimages
Credit: Hamish Blair

72912078



Median nerve entrapment in proximal radius fracture

- Median nerve entrapment is a **rare complication** of forearm fractures
- The exact incidence of proximal median nerve entrapment in the population is not well understood, but it accounts for fewer than 1% of upper-extremity compressive syndromes.
- **Neurolysis and neurorrhaphy** were the most common management procedures
- **Meticulous clinical examination** before and after closed reduction to detect a nerve injury, **clinician continuity** in serial follow-up examinations, **MRI and early exploration** of persistent neurological deficits

Fourati A et al. Median nerve entrapment in a callus fracture following a pediatric both-bone forearm fracture: A case report and literature review. Arch Plast Surg. 2019 Mar