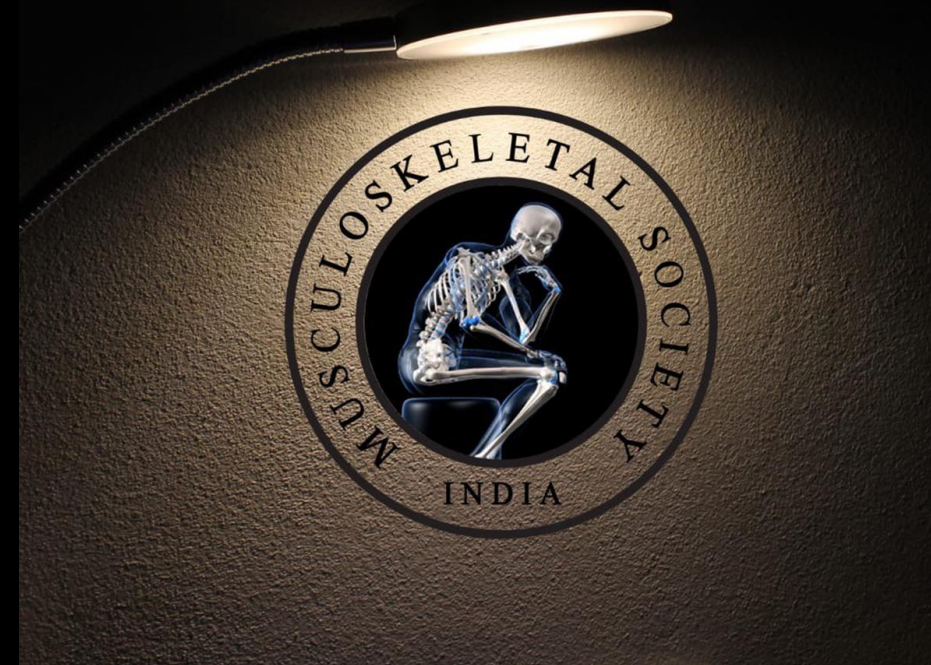


MICOD – 14-06-24

Case contributor – Dr. Sonal Saran

# MI-COD

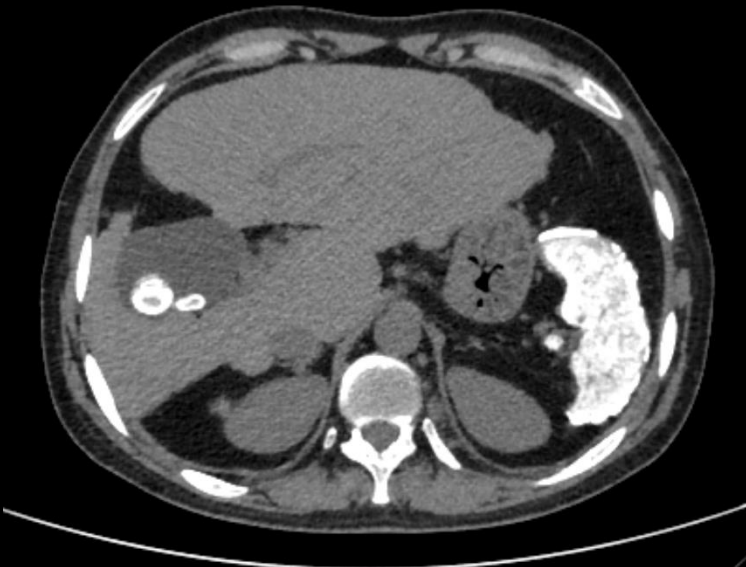
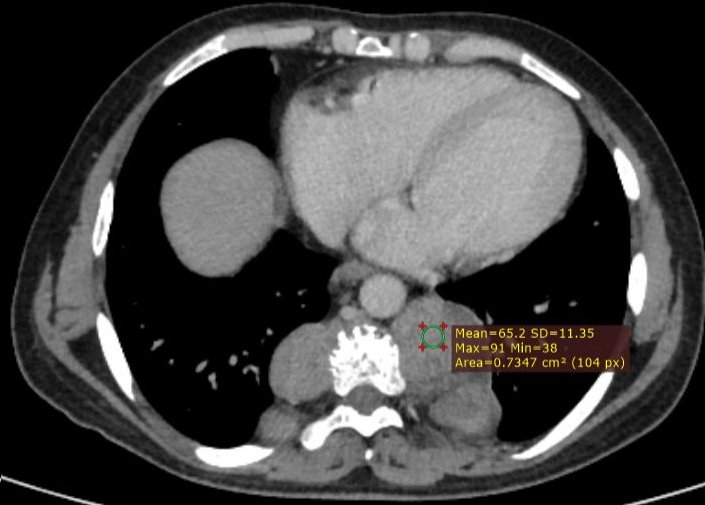
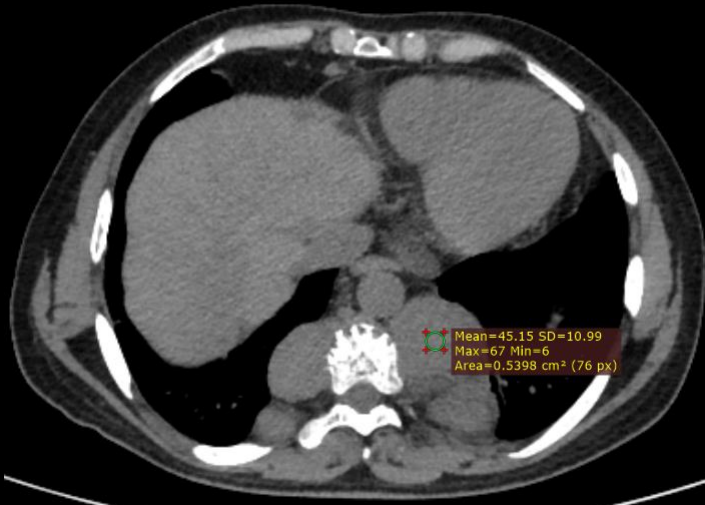
MSS INDIA- Case Of the Day

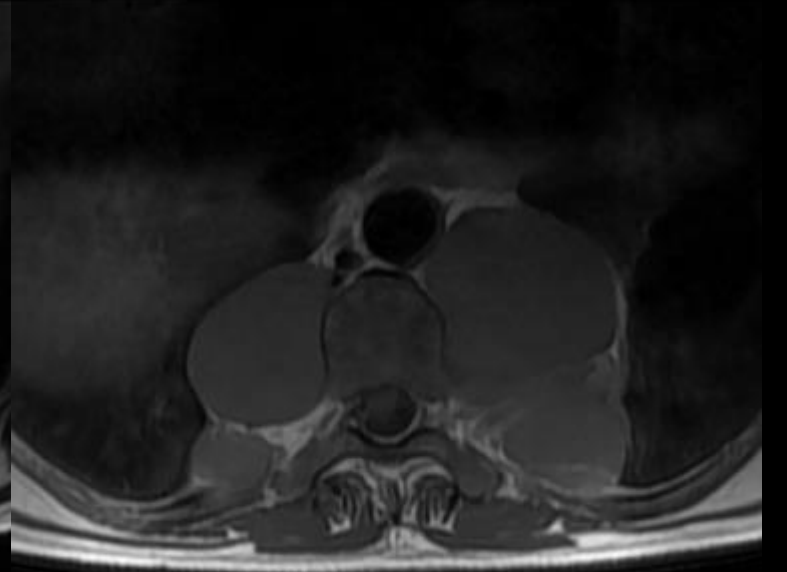
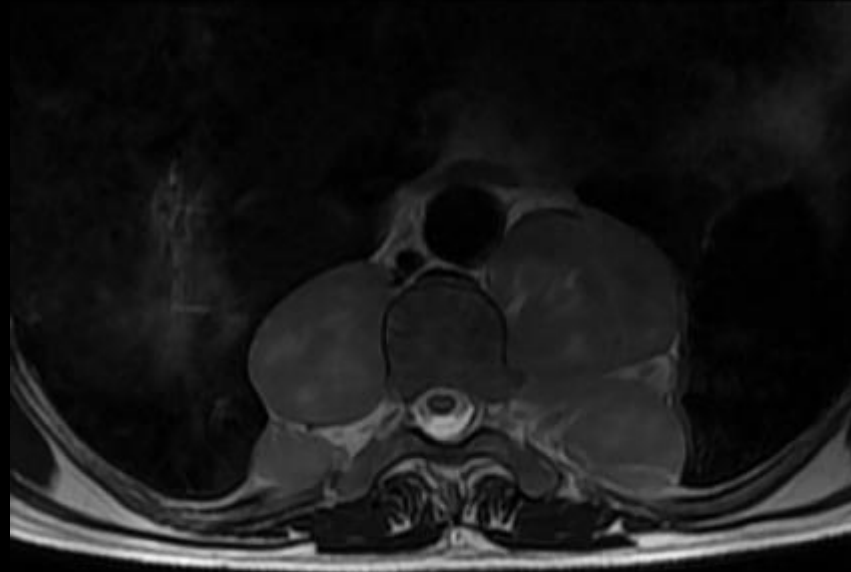


A 26-year-old man

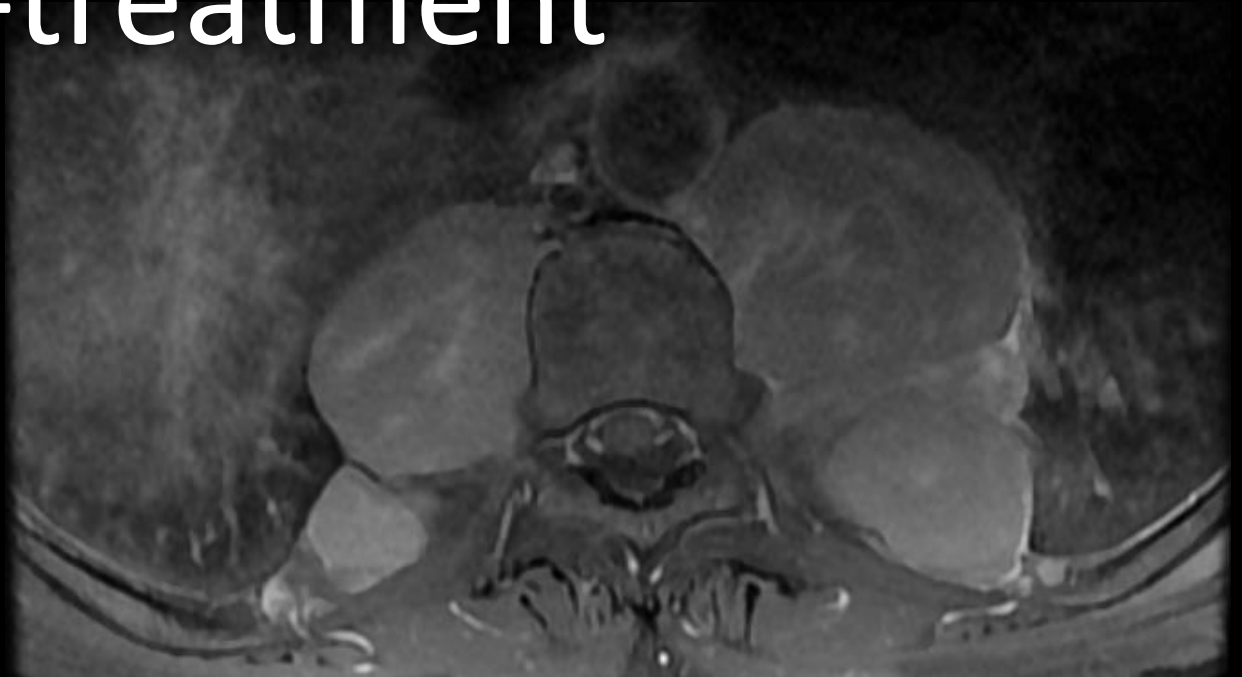
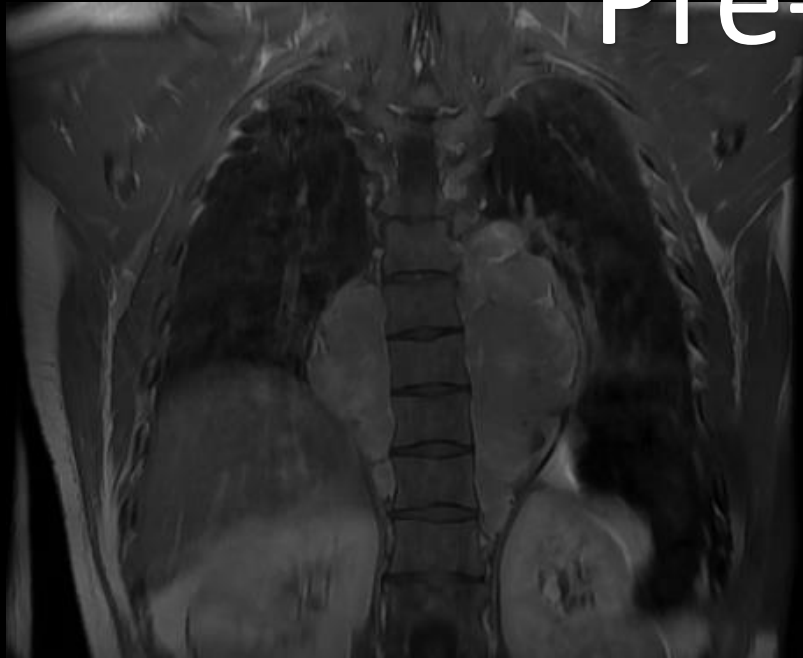


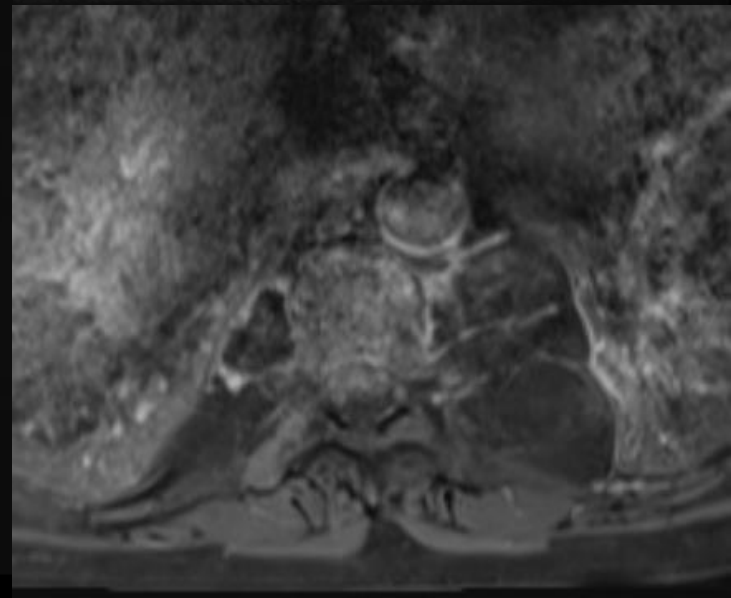
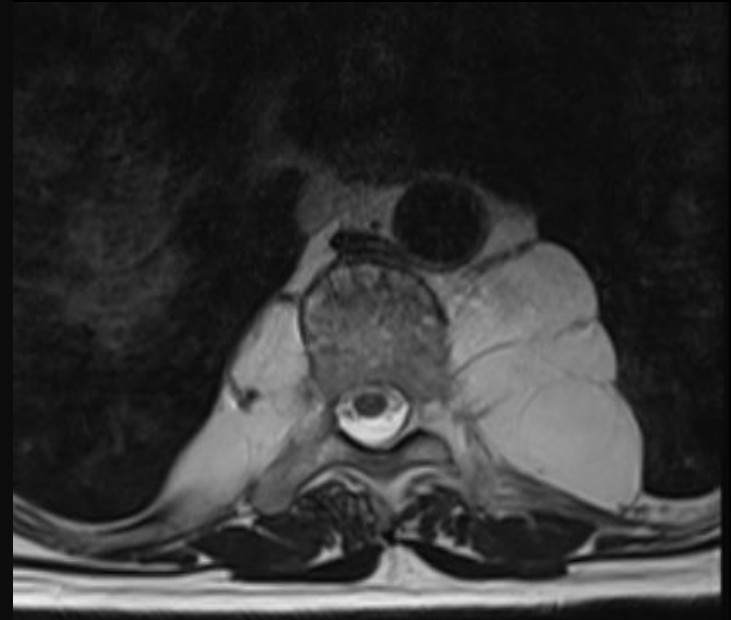
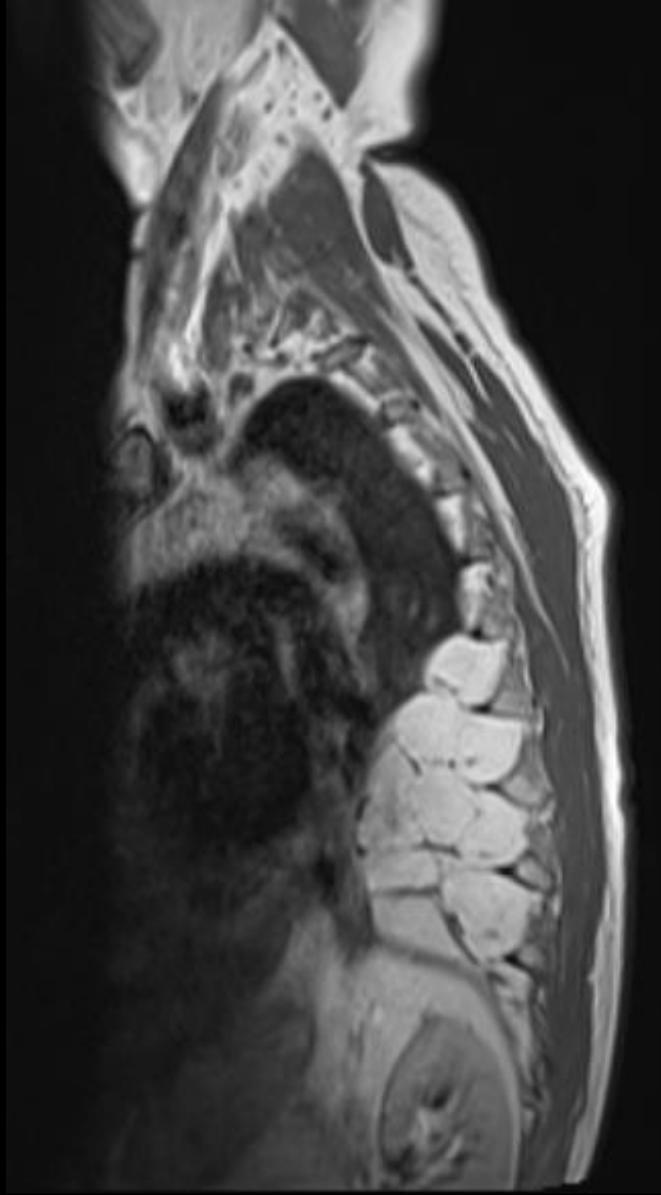






Pre-treatment





Post-treatment with two cycles of radiotherapy (20 gray in 10 fractions) one year apart, along with hydroxyurea

**EMH presents variably on imaging, which can be attributed to the differing proportions of hematopoietic cells, fat, and fibrotic elements in various EMH masses.**

**In this report, we describe the case of a 26-year-old man diagnosed with sickle beta thalassemia and EMH, who underwent imaging in our department over a period of two years.**

**The imaging demonstrated the evolution of EMH in response to treatment (radiotherapy and hydroxyurea), culminating in the characteristic appearance of inactive/burnout EMH on Magnetic Resonance Imaging (MRI).**