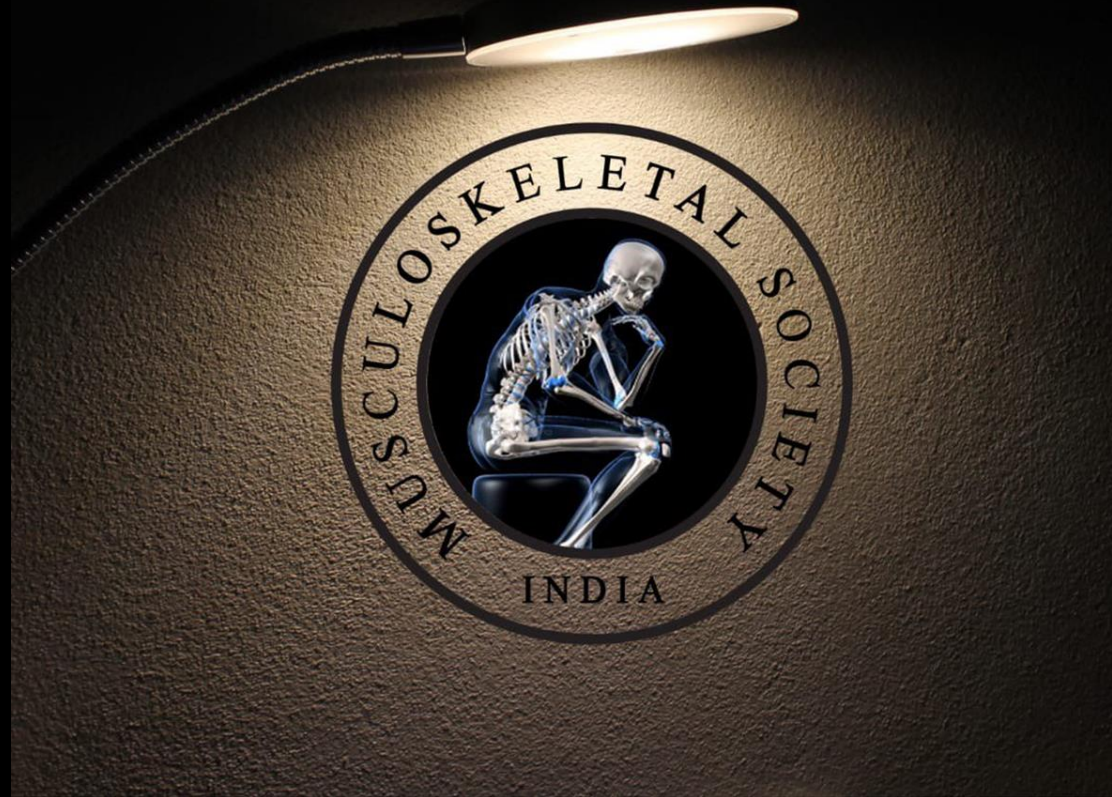


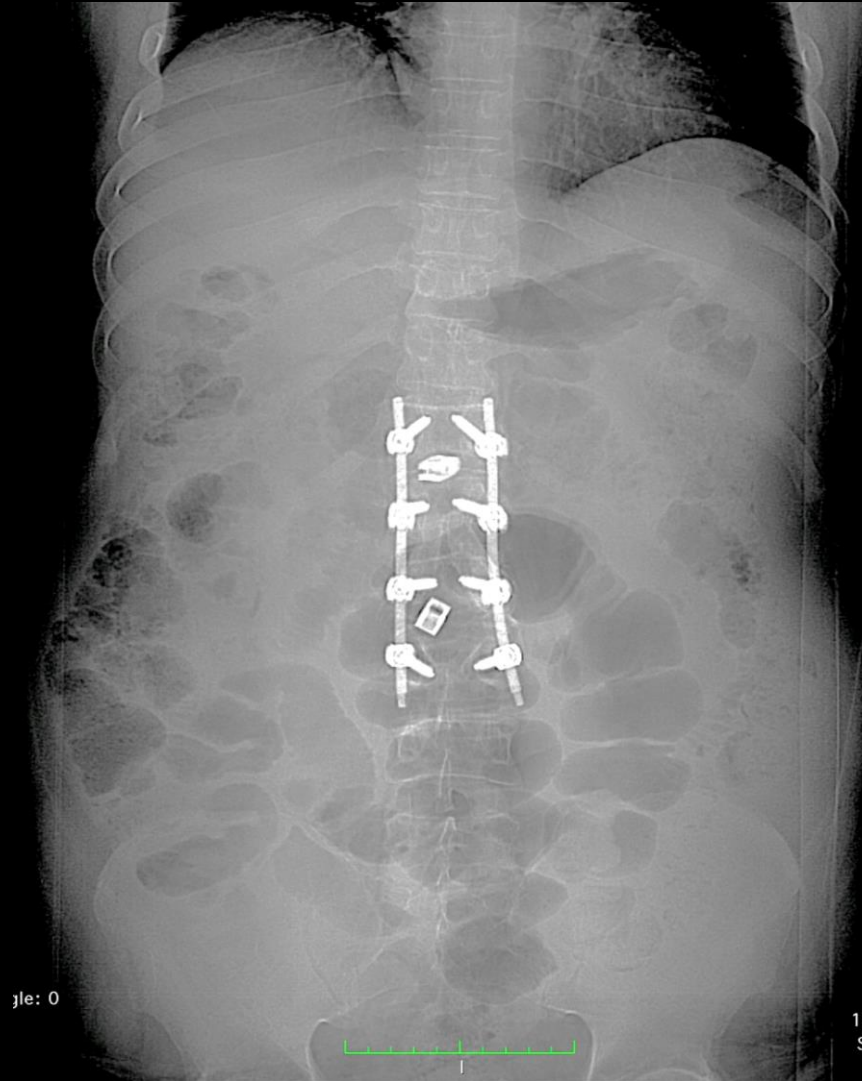
MICOD – 07/06/2024  
Case contributor – Dr. Ankur Shah

# MI-COD

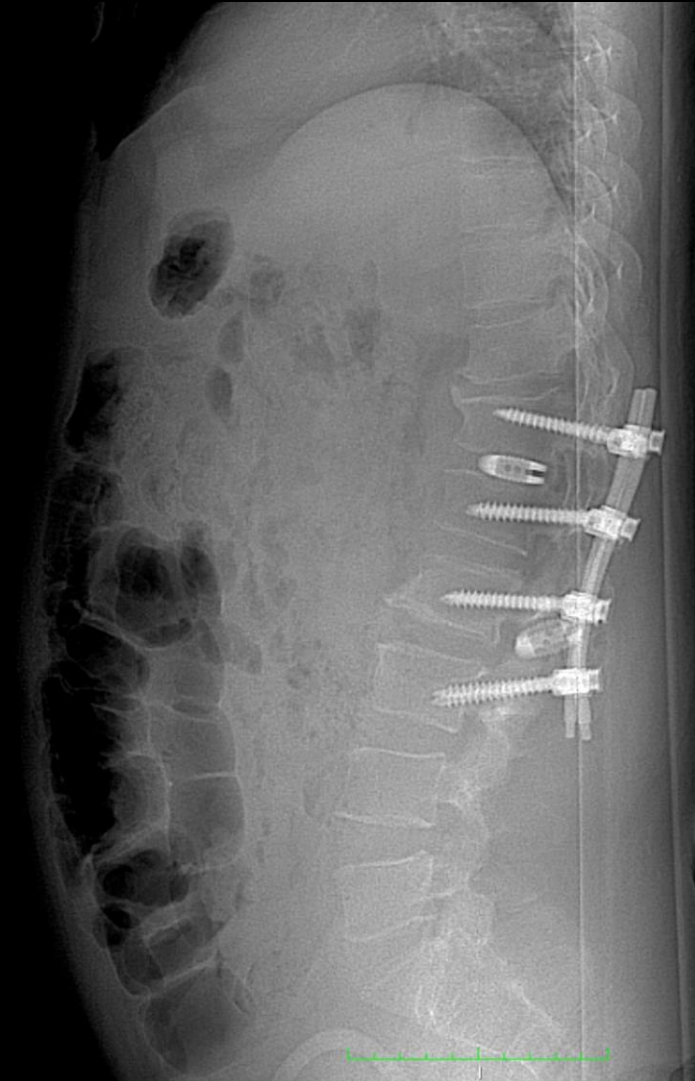
MSS INDIA- Case Of the Day



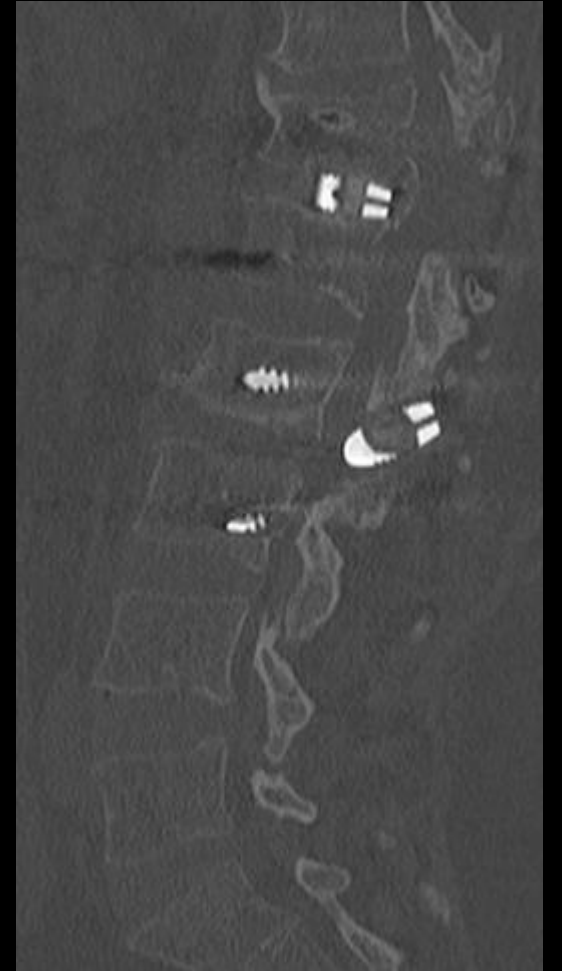
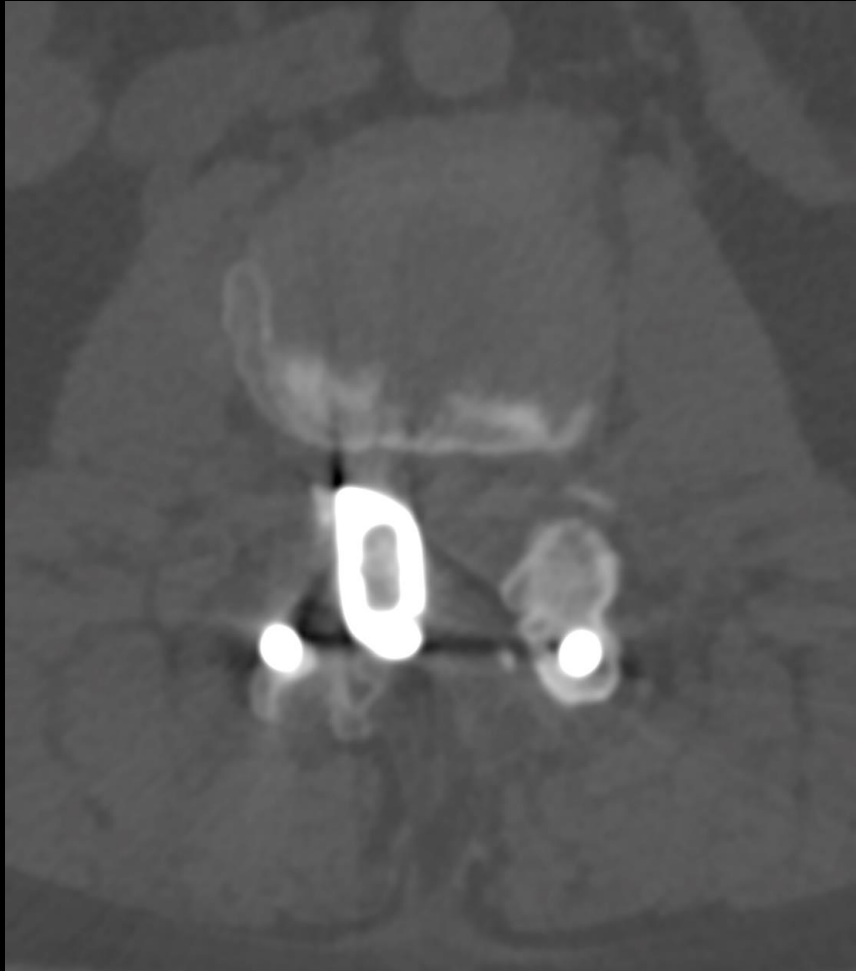
# Diagnosis?



12/  
Sat

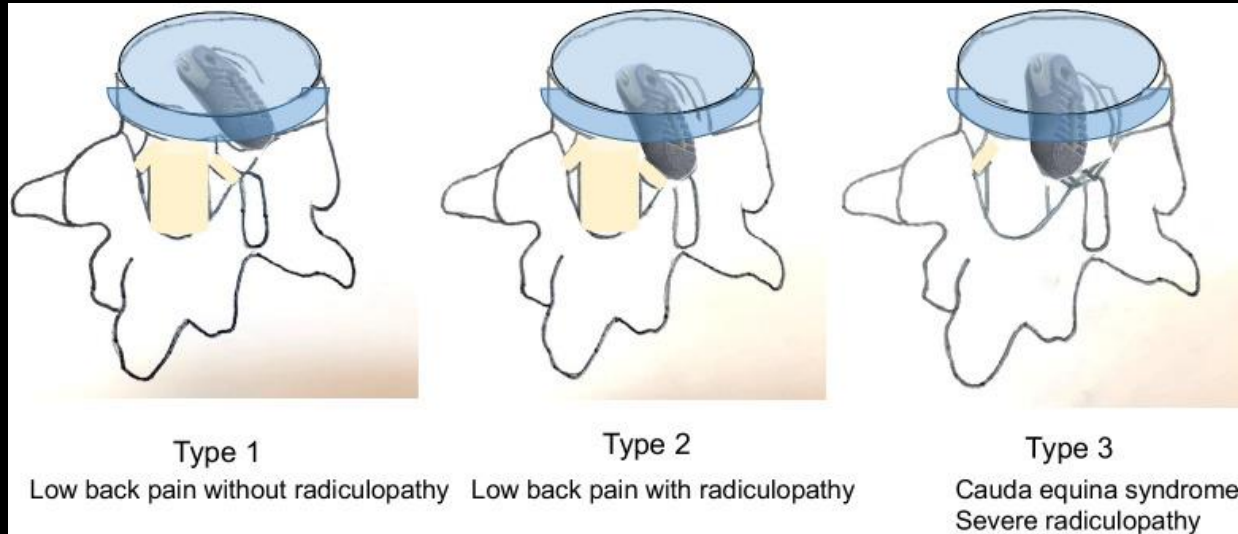


# Displaced disc cage





# Cage migration



*Symptomatic pseudarthrosis and cage migration/protrusion are difficult complications of transforaminal or posterior lumbar interbody fusion*

*If the patient experiences severe radicular symptoms, removal of the migrated cage is necessary*

- Risk factors
  - ✓ low BMI, younger age, male sex
  - ✓ loosening of posterior instrumentation
  - ✓ pear/bullet-shaped cage
  - ✓ undersized cages
  - ✓ higher posterior disc height
  - ✓ presence of scoliotic curvature
  - ✓ fusion at the L5/S1 level
- Surgeon experience less than 3 years & lumbar spondylolisthesis appear to be significantly associated with posterior cage migration





Thank you