

MICOD – 05/03/2024

Case contributor – Dr. Rakhee Kumar Paruchuri

MI-COD

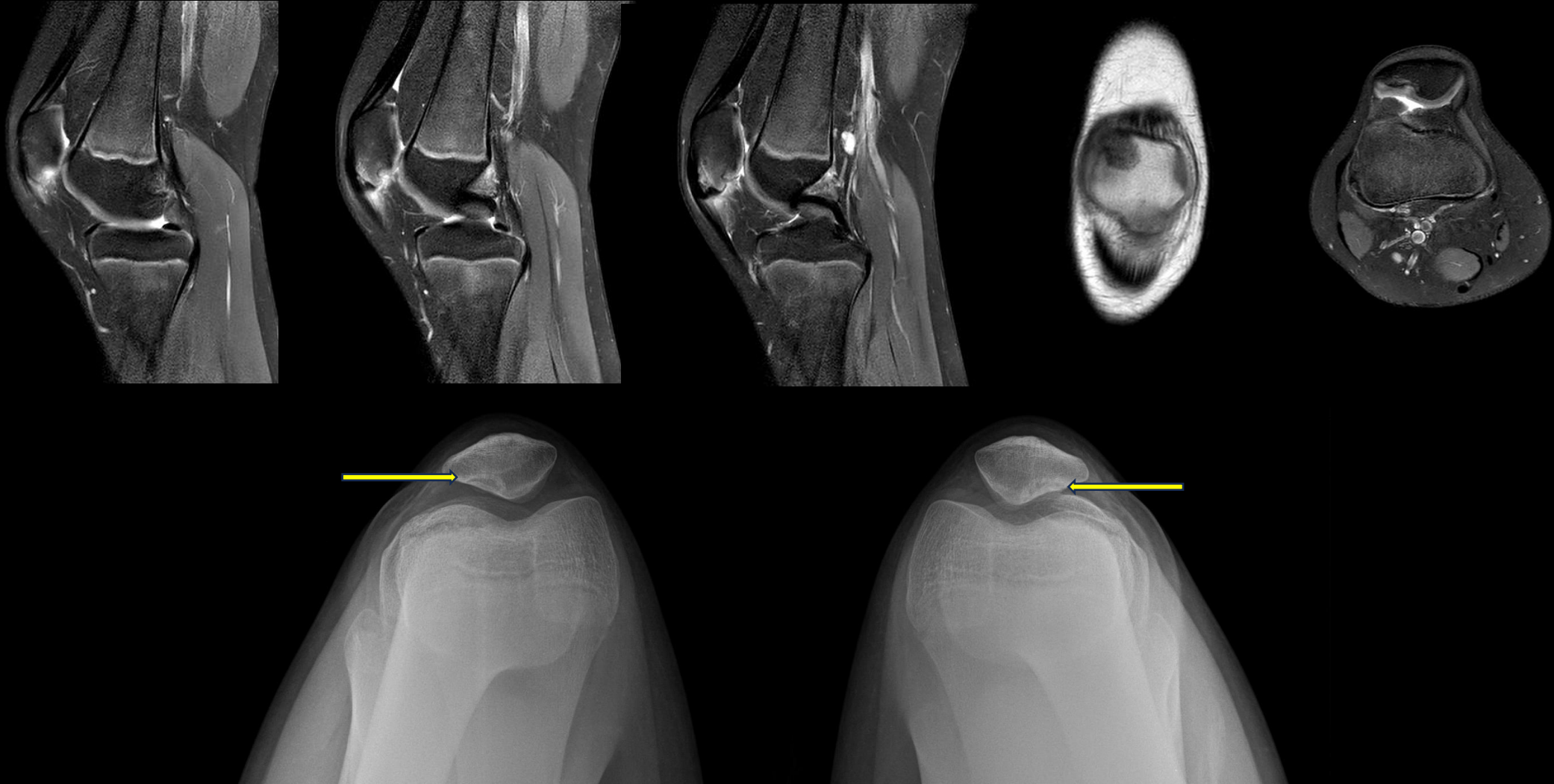
MSS INDIA- Case Of the Day



12-year-old boy with knee pain



Sinding – Larsen – Johansson syndrome & dorsal defects of patella

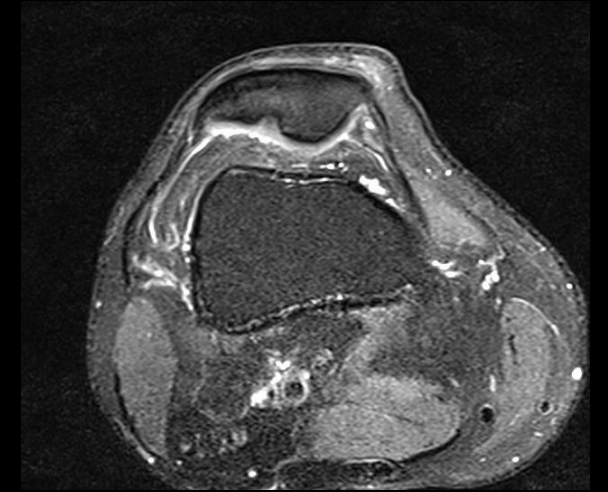


Sinding – Larsen – Johansson syndrome

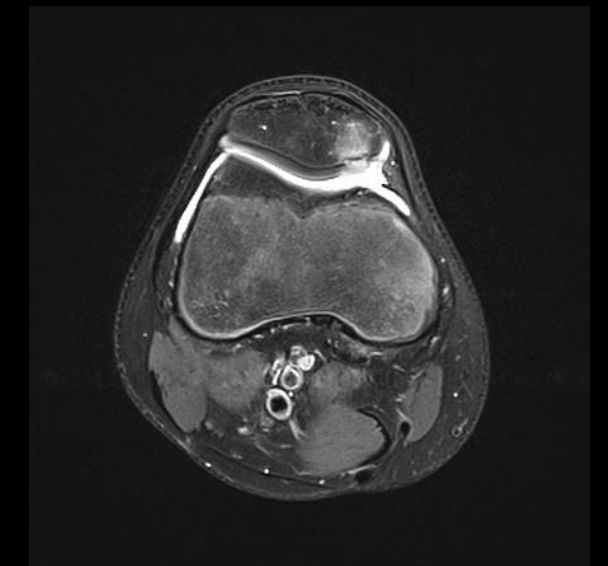
- Also known as osteochondrosis of the inferior pole of the patella
- Affects the proximal end of the patellar tendon at its insertion into inferior pole of patella
- *Chronic traction injury of the immature osteotendinous junction*
- It is a closely related to Osgood-Schlatter disease
- Some authors classify SLJ as a pediatric version of "jumper's knee"
- MRI
 - ✓ Proximal and posterior parts of patellar tendon are thickened with high T2/STIR signal
 - ✓ Bright T2/STIR signal may also be seen in the inferior pole of the patella and adjacent fat

DORSAL DEFECTS OF PATELLA

- Benign subchondral lesions of unknown etiology and a normal developmental anomaly of the patella
- Can be mistaken for a pathological process such as a focus of infection or osteochondritis dissecans
- M = F, most frequently found in adolescents
- B/L - up to one-third, asymptomatic, Incidental finding
- Occasionally may be the cause of knee pain
- *Classical touch me not lesion*
- *Differential diagnosis - Osteochondritis dissecans, typically inferomedial & articular cartilage involvement*



DORSAL DEFECT



OSTEOCHONDRITIS DESSICANS