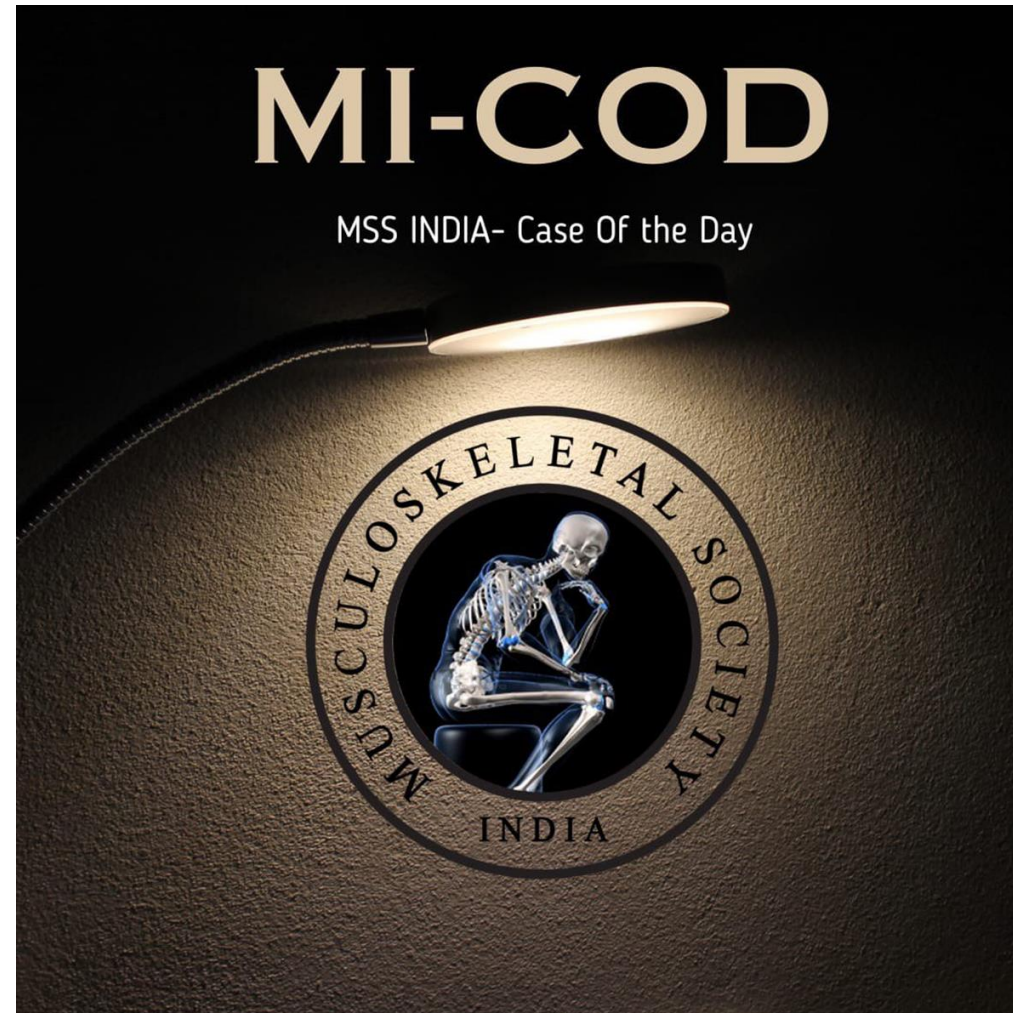
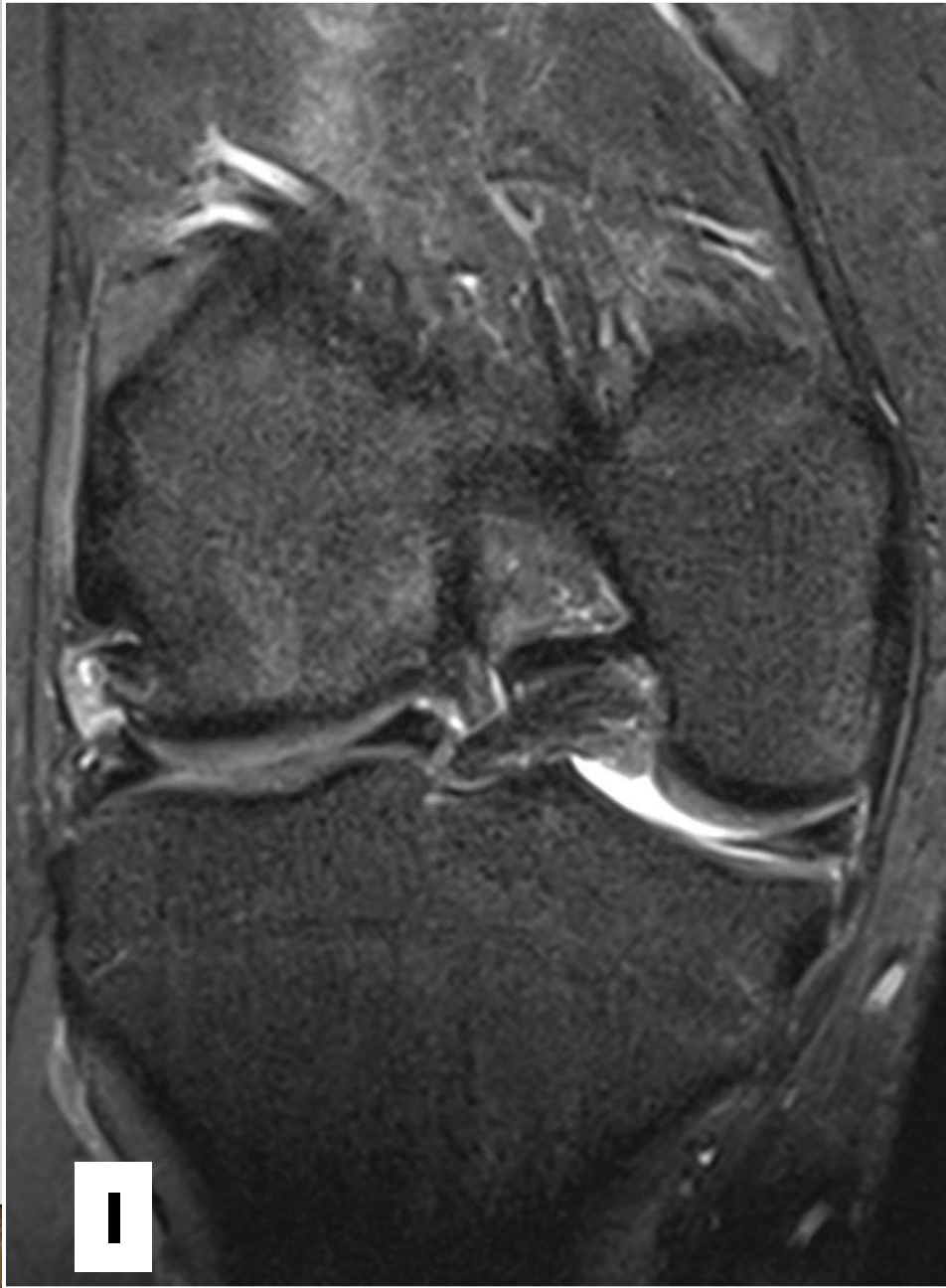


MICOD -27/08/2023

Case contributor – Dr.Neha Nischal & Dr. Rajesh Botchu





QUESTIONS

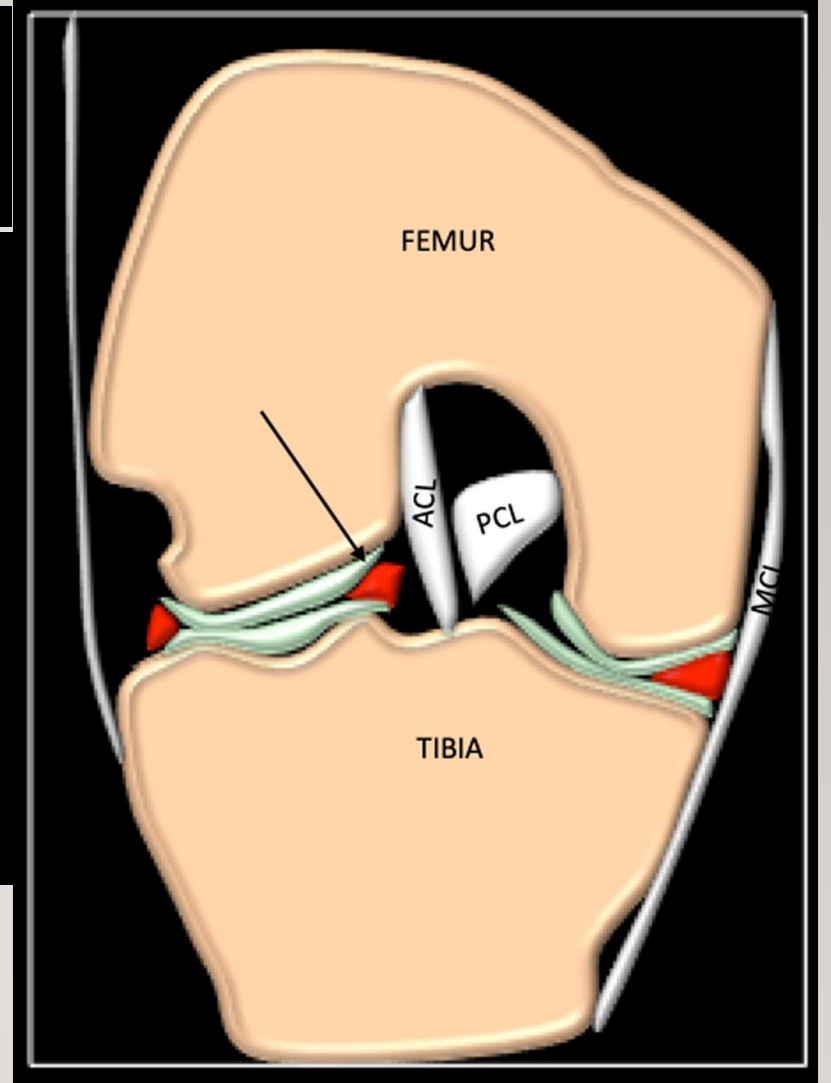
- What is the diagnosis in case 1?
- What is the diagnosis in case 2?
- How will you differentiate between the two?

ANSWER

- Case 1 - Ring Shaped Meniscus
- Case 2 - Bucket Handle Tear

THE 'MIRROR IMAGE' SIGN

- Coronal sequences
- Inter-meniscal bridge is a mirror of the meniscal body
- Triangular shape
- Smoothly interposed between the femoral and tibial articular cartilage
- NOT in the notch



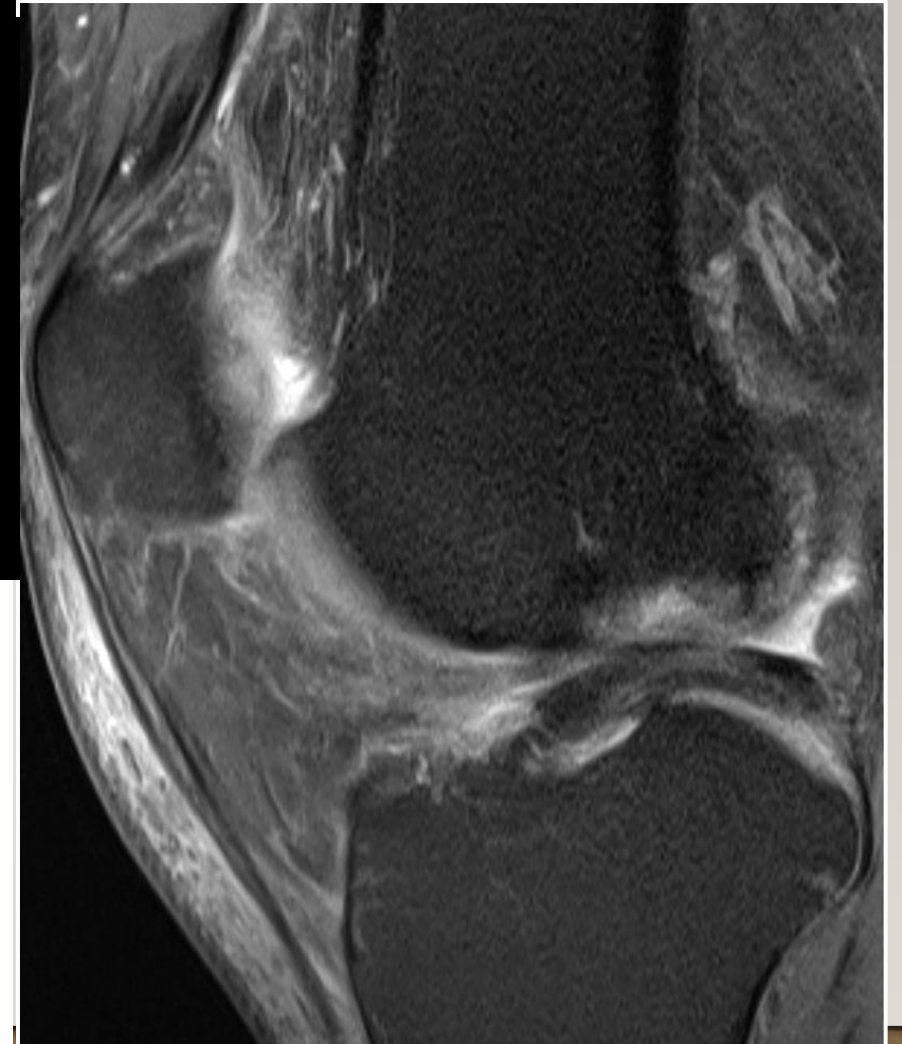
THE 'CENTRAL BOW TIE' SIGN

Sagittal sequences

Bow-tie appearance of the inter-meniscal bridge on two consecutive slices

Similar to the normal 'bow tie' appearance of the meniscal body

'Absent bow' tie sign present in a BHT



> [Skeletal Radiol.](#) 2020 Feb;49(2):281-289. doi: 10.1007/s00256-019-03277-y. Epub 2019 Jul 30.

The ring-shaped meniscus: a case series demonstrating the variation of imaging appearances on MRI

A Iqbal ¹, E McLoughlin ¹, Rajesh Botchu ², S L James ¹

Affiliations + expand

PMID: 31363822 DOI: [10.1007/s00256-019-03277-y](#)