

Date: 17.09.2023

Case Courtesy: Dr. Sanjay Desai, Deenanath Mangeshkar Hospital, Pune.

MI-COD

MSS INDIA- Case Of the Day



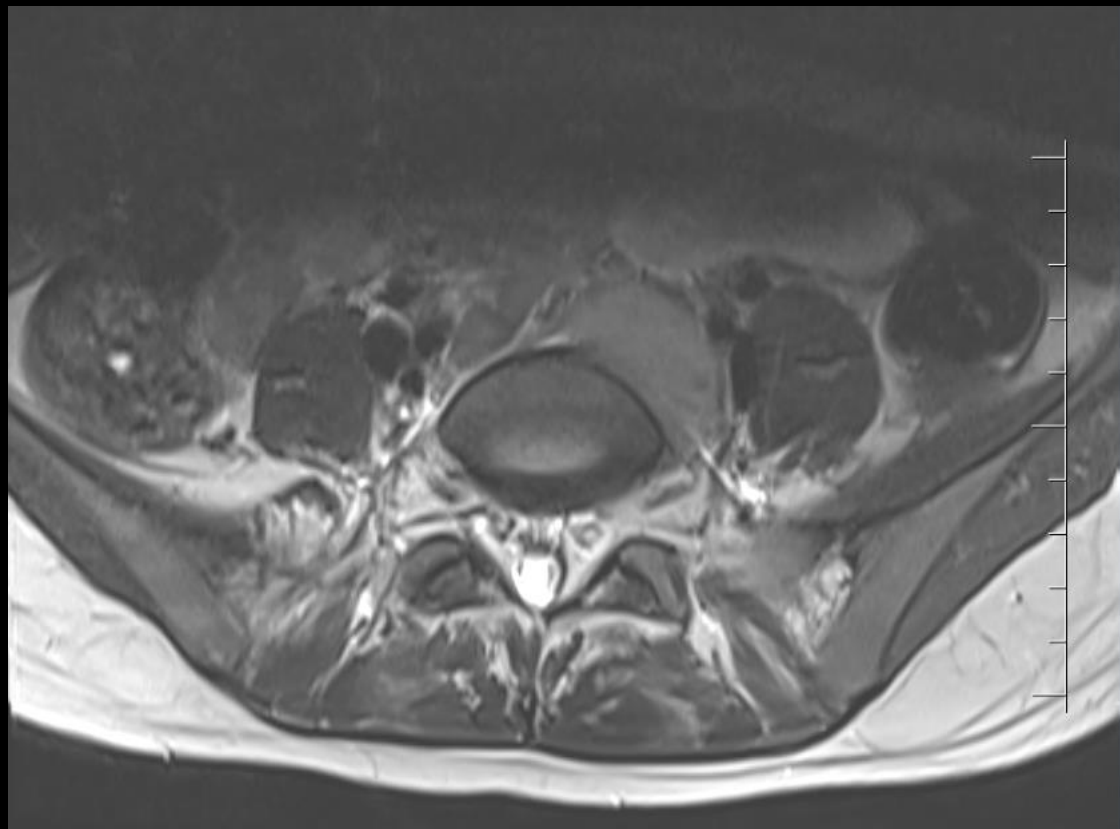
CLINICAL DETAILS

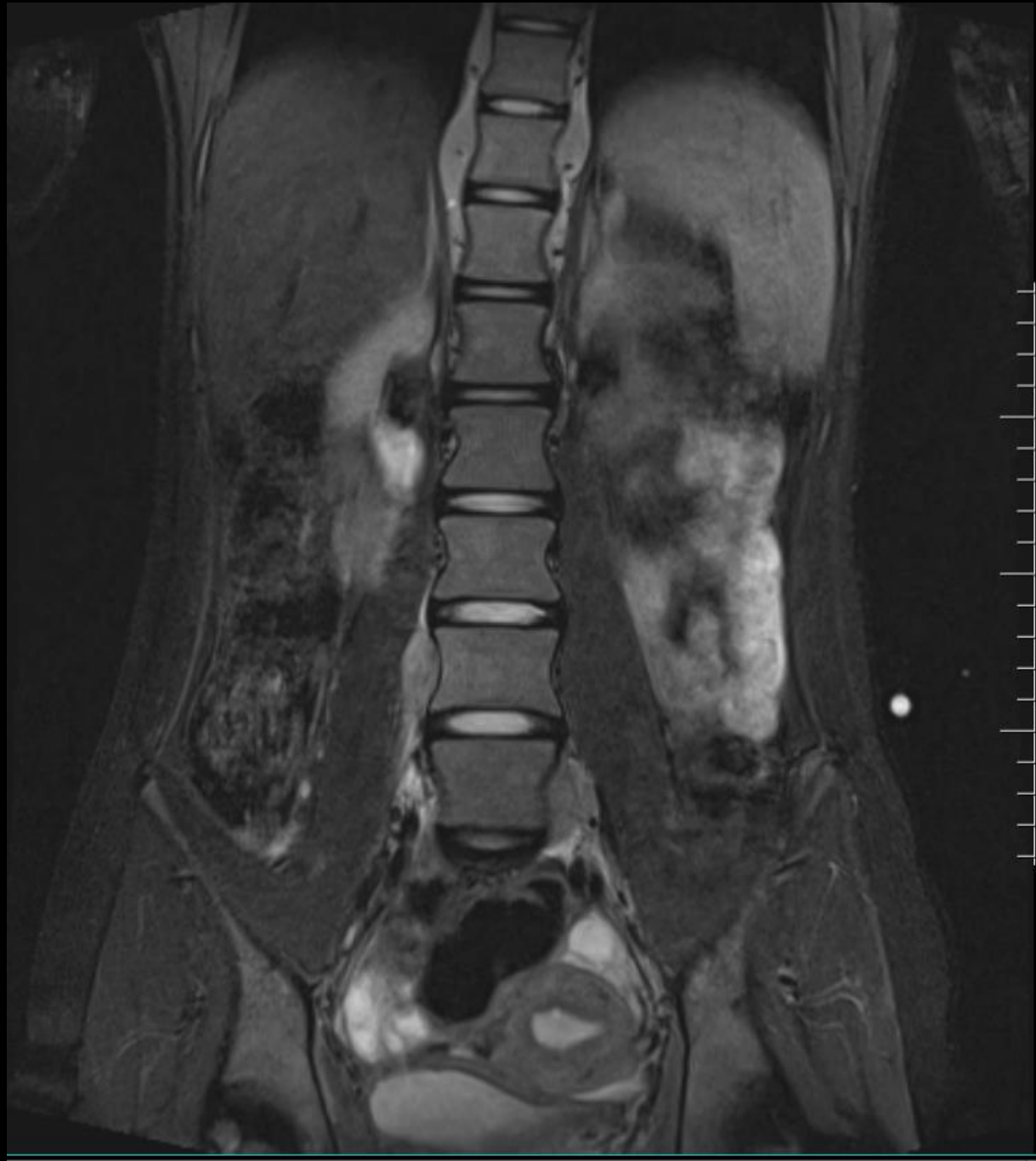
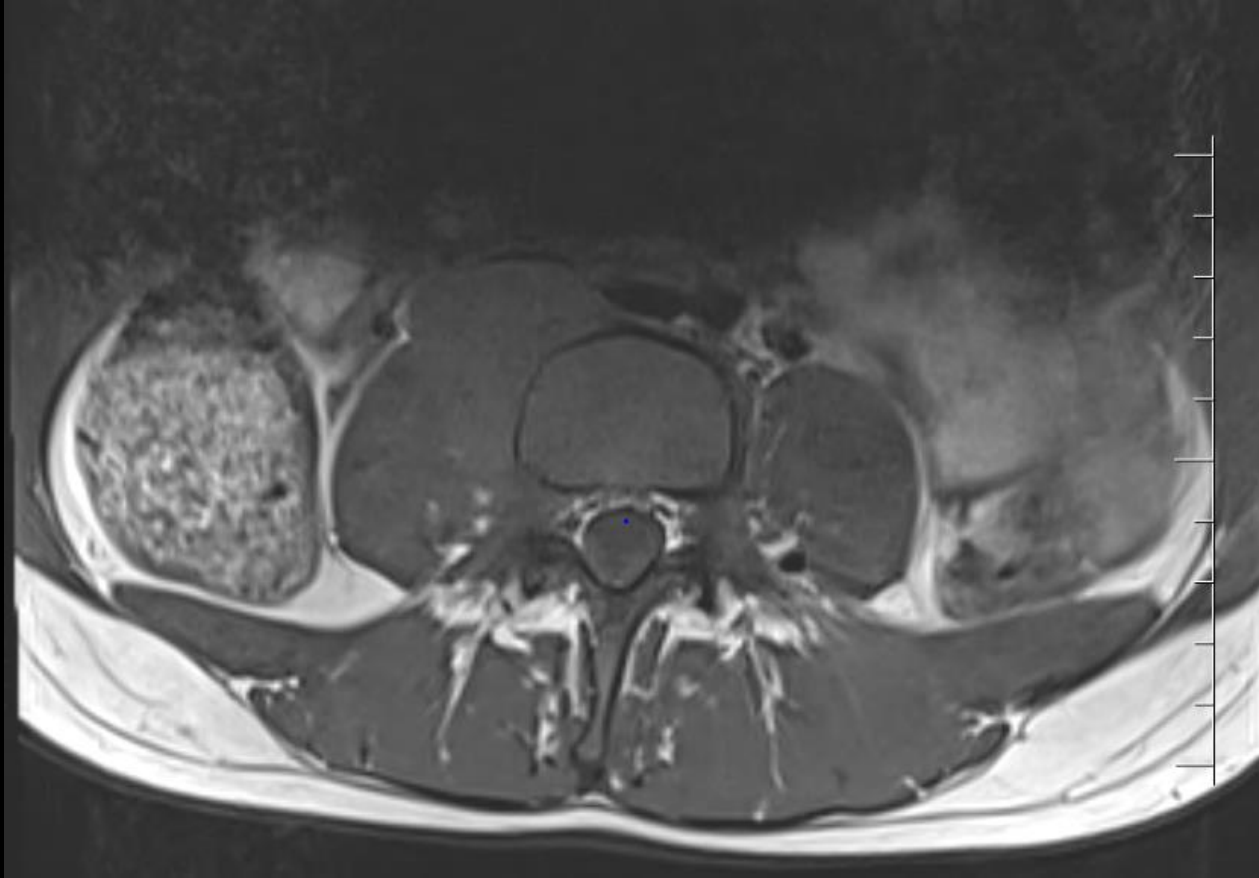
15 year old girl with...

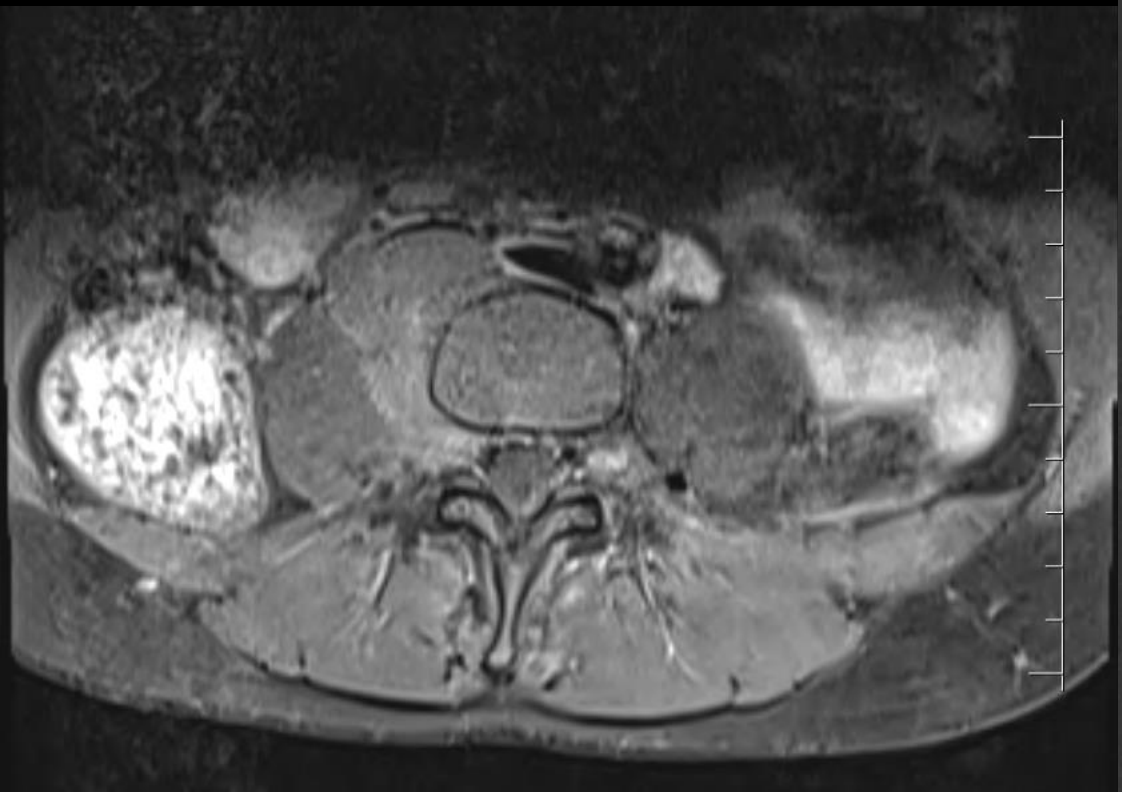
- Left buttock pain since 20 days increased since 3 days
- Sacral anesthesia since 5 days
- Bladder overflow incontinence.
- No relevant past history

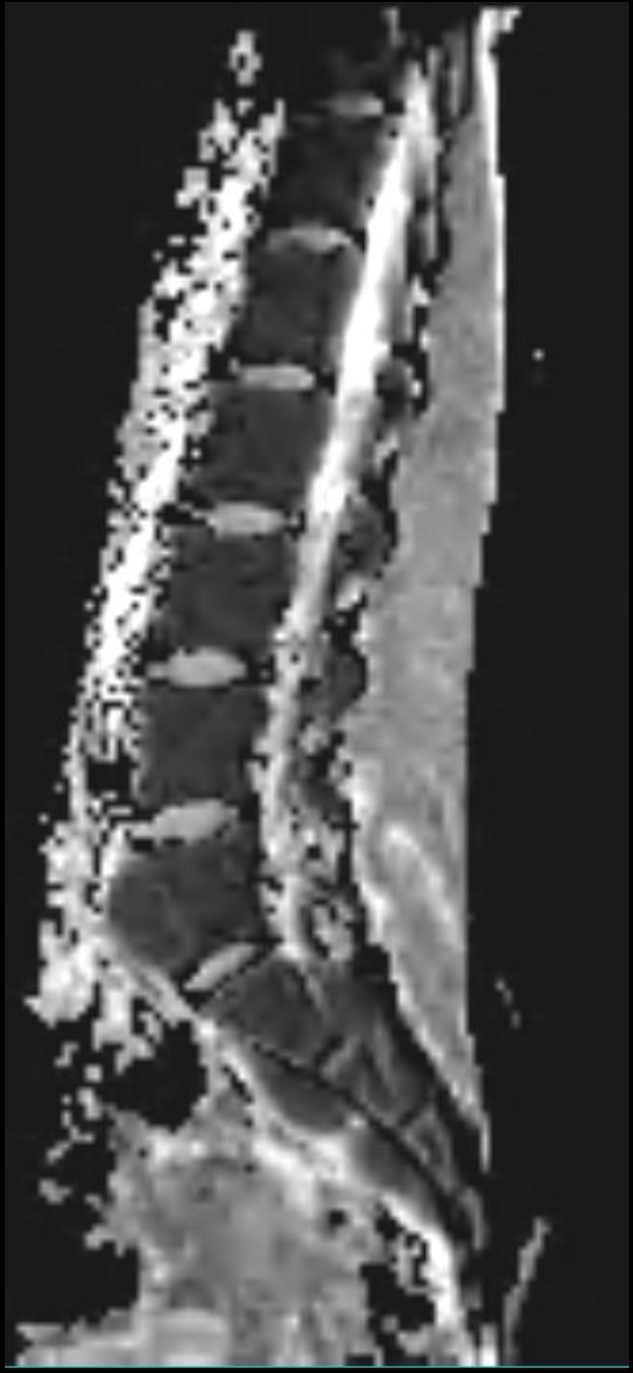


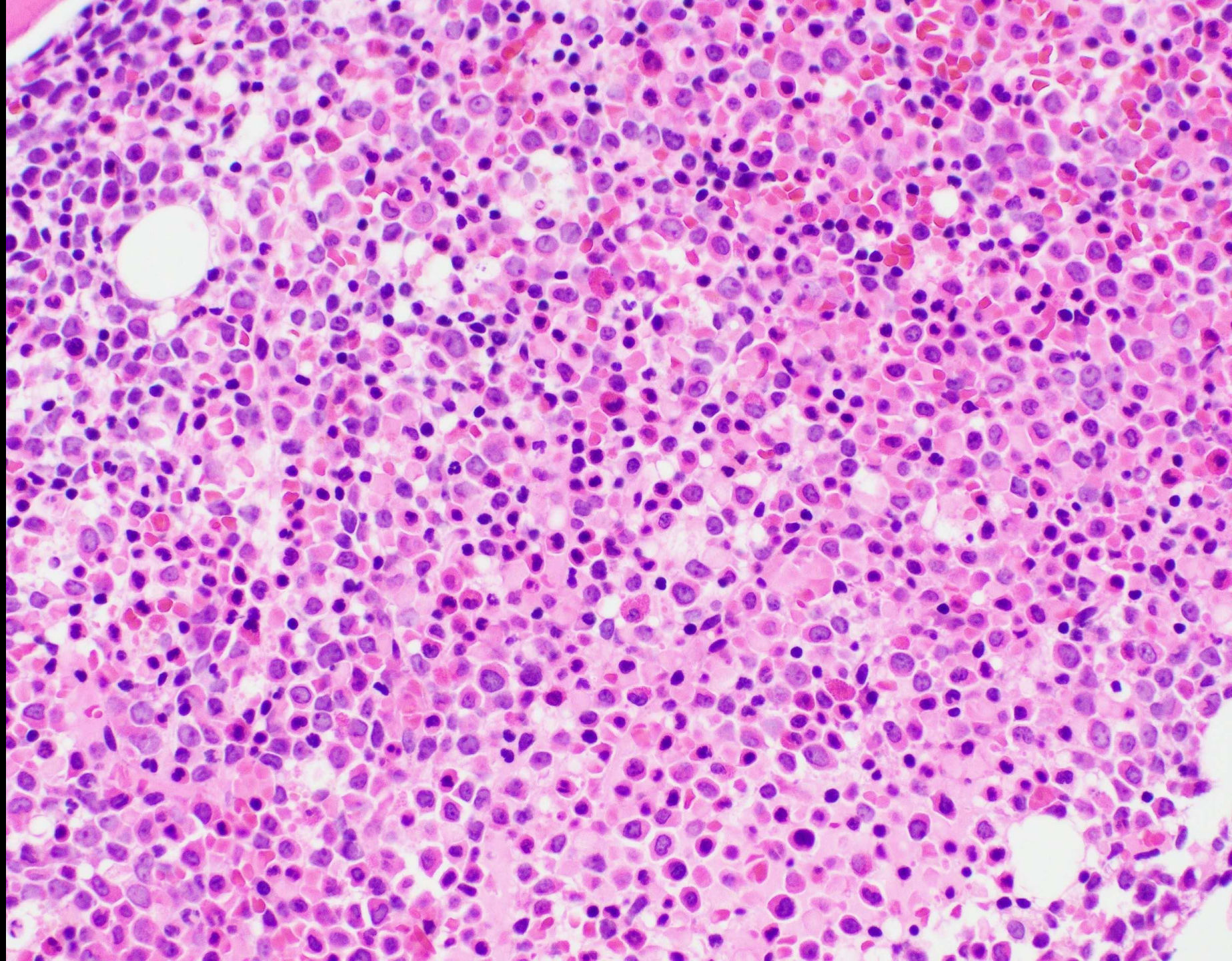












MRI FINDINGS

-Diffuse T1 and T2 hypointense, STIR hyperintense signal in all the visualized bones.

-Multilevel pre and paravertebral homogeneously enhancing soft tissue lesions at right lateral aspect of L4, lateral aspect of L5 and midline upper sacral vertebral level with neural compression.

Imaging findings favour a diagnosis of marrow proliferative pathology like AML with multifocal chloroma formation.

Hb (12-15 gm%)	7.3
RBC (4-5 Mill/cmm)	2.18
TLC (4000-10000)	18,280
Blast cells	63
Platelet	26,000

Blood Smear

- Macrocytosis, mild anisocytosis, few normocytic normochromic cells seen
- Leucocytosis, shift to left. 63% blasts seen. The blasts are medium to large in size with high N:C ratio, nuclear cupping, open chromatin, 1-2 prominent nucleoli, moderate pale blue cytoplasm. Occasional blasts show Auer rods
- Platelets are reduced on smear
- PBS findings are suggestive of acute myeloid leukemia.
- Further Immunophenotyping by flow cytometry and Cytogenetics/ Molecular studies were done which confirmed the diagnosis.

CHLOROMA

- Myeloid sarcomas/granulocytic sarcomas/extramedullary myeloid tumors, are rare extramedullary masses comprised of myeloid precursor cells.
- Unique presentation of AML.

- Differentials for pre/paravertebral soft tissue lesions

Extramedullary hematopoiesis.

- Myeloproliferative disorders- Leukemia, PCV, thrombocytosis, myelofibrosis, lymphoma.
- Hemoglobinopathies- SCA, thalassemia, hereditary spherocytosis.

Infection.