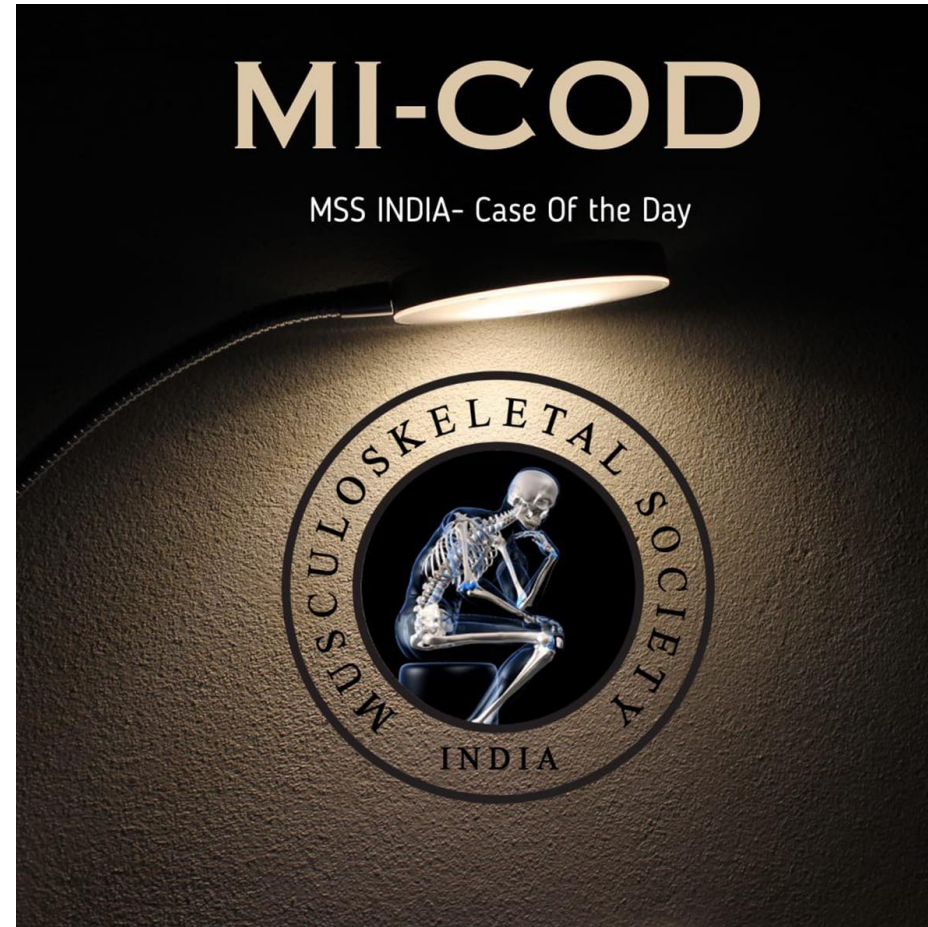
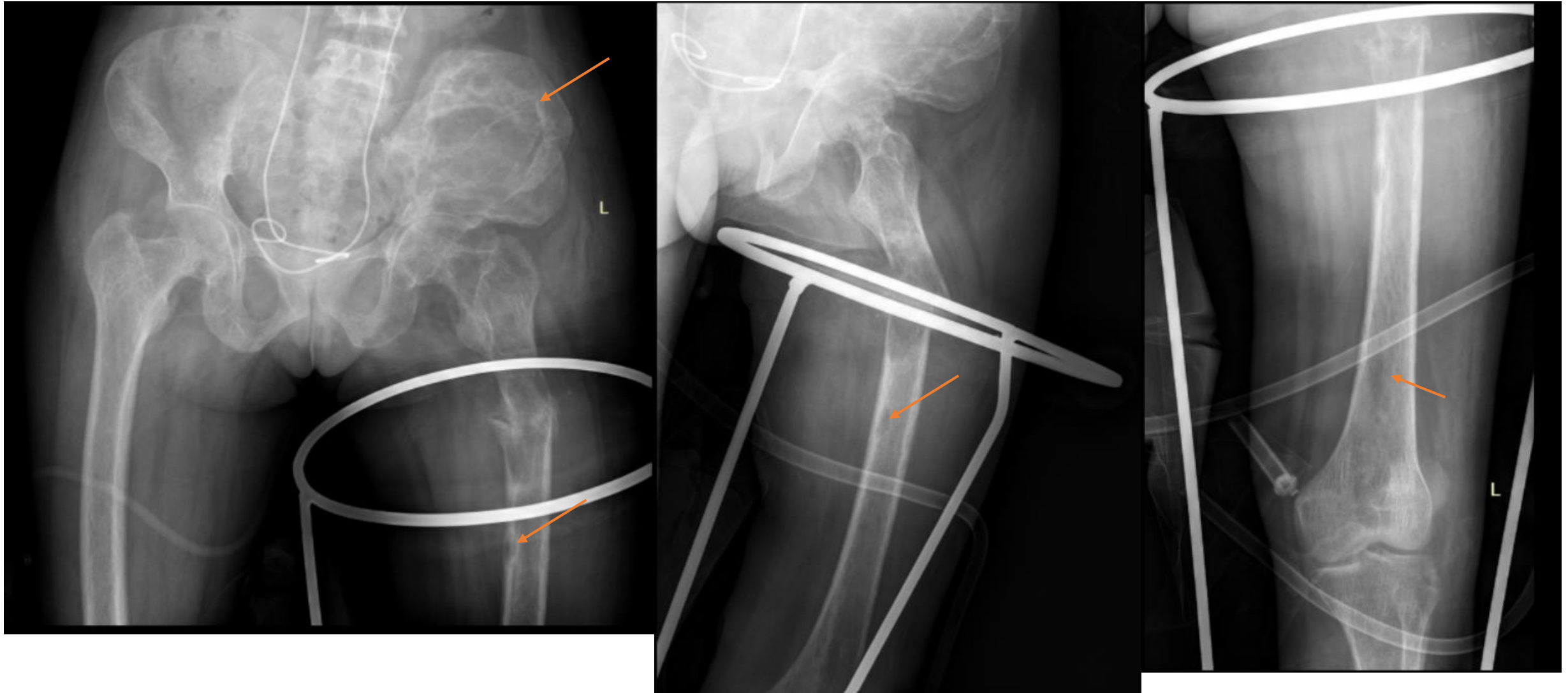


MICOD – 09/09/2023
Case contributor – Dr. Sonal Saran



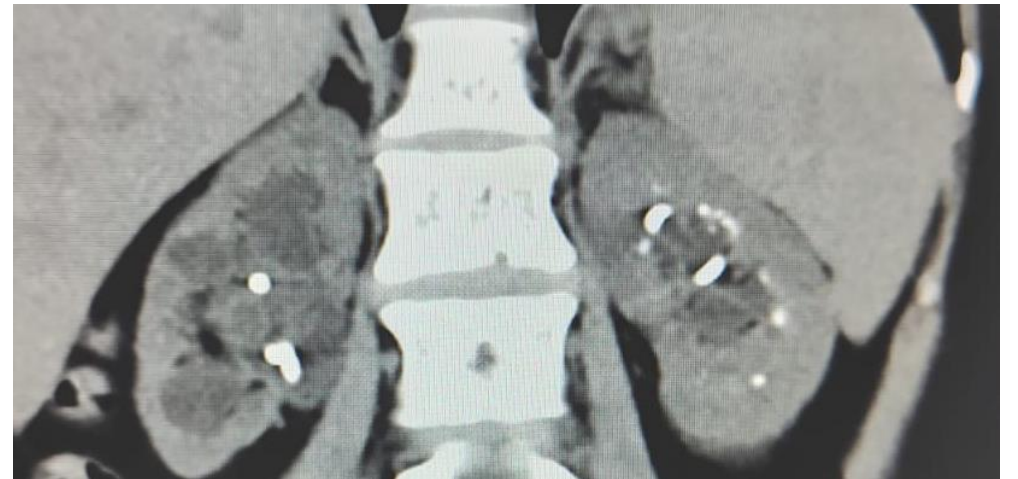
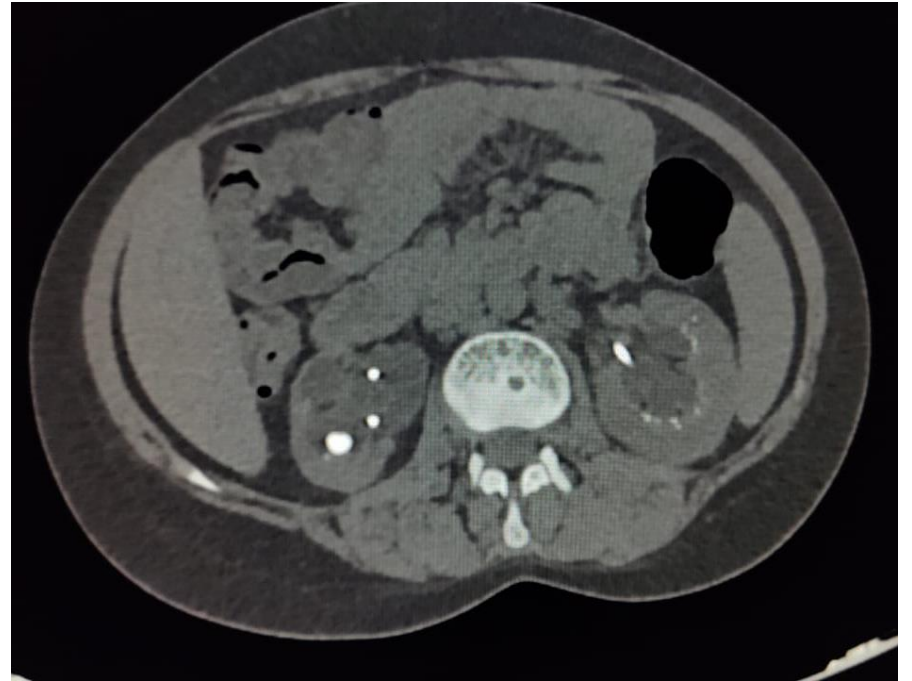
A 26-year-old female with multiple fragility #s and bone pain.

Obstructive kidney disease bilateral



Multiple cortical and intramedullary lytic lesions in pelvic bones and femurs.
Pathological # in left femur diaphysis.
Presence of bilateral DJ stent





Multiple lytic and sclerotic lesions in the entire skeleton.

Medullary nephrocalcinosis

The patient is known case of primary Hyper PTH due to parathyroid adenoma which is operated.