

Date:18.08.2023 –ANSWER

Case courtesy – Dr. Rajesh Botchu

MI-COD

MSS INDIA- Case Of the Day



66 year old female with back pain

Figure 1a-d: Sagittal T1 (a), STIR (b), T2 (c) and axial T2 (d) MRI images demonstrating an expansile, multiloculated cystic lesion in T11 vertebra extending to the pedicles (white arrows). Multiple fluid-fluid levels present. There is also perilesional oedema within the T11 vertebral body.

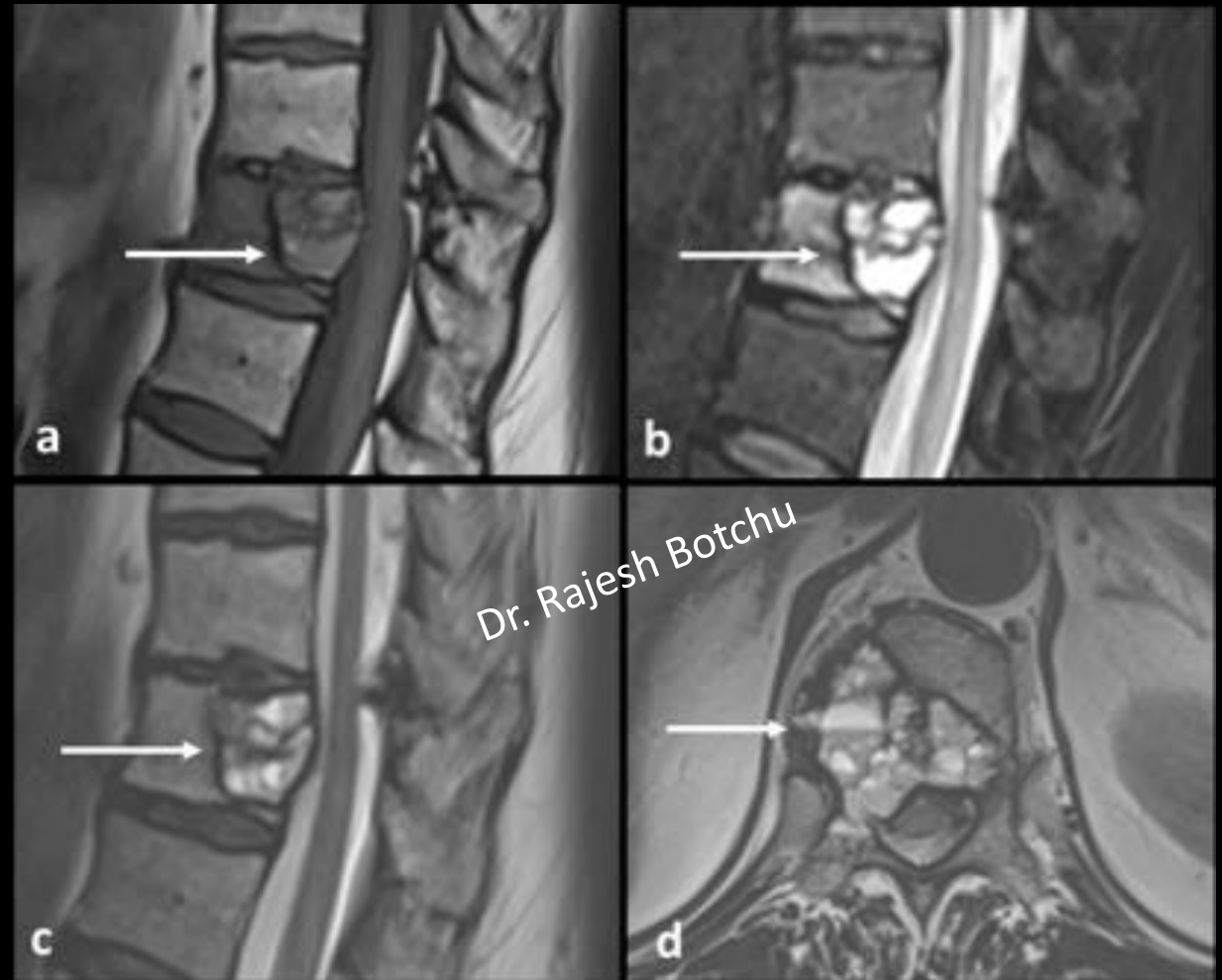
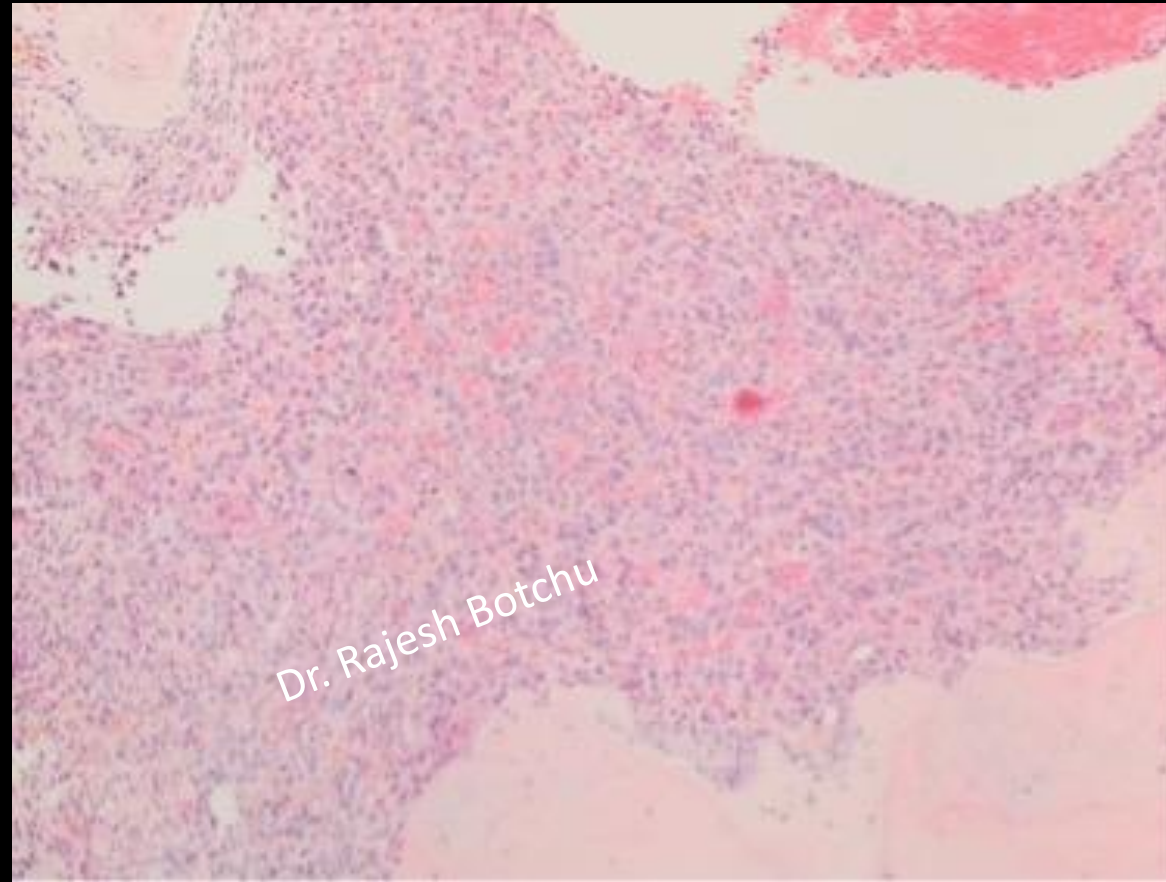


FIG 2 : Axial CT scan shows large destructive lesion in vertebral body



Figure 3: Histological image of lesion showing infiltration by malignant epithelial cells confirming metastatic breast carcinoma (*blue*). There are no features of an aneurysmal bone cyst



Dr. Rajesh Botchu

Breast metastasis with fluid fluid level

The presence of fluid- fluid levels in bone metastases is a rare finding and sparsely described in the literature particularly with breast carcinoma.

Of the cases described, the majority are seen with renal and lung carcinoma.

A literature search revealed only 3 osseous metastatic lesions with fluid-fluid levels from metastatic breast carcinoma

Bony metastases characteristically present as osteolytic and less commonly osteoblastic (sclerotic) or mixed lesions.