

MICOD- 04/09/2023

Contributor- Dr. Raj Chari

MI-COD

MSS INDIA- Case Of the Day

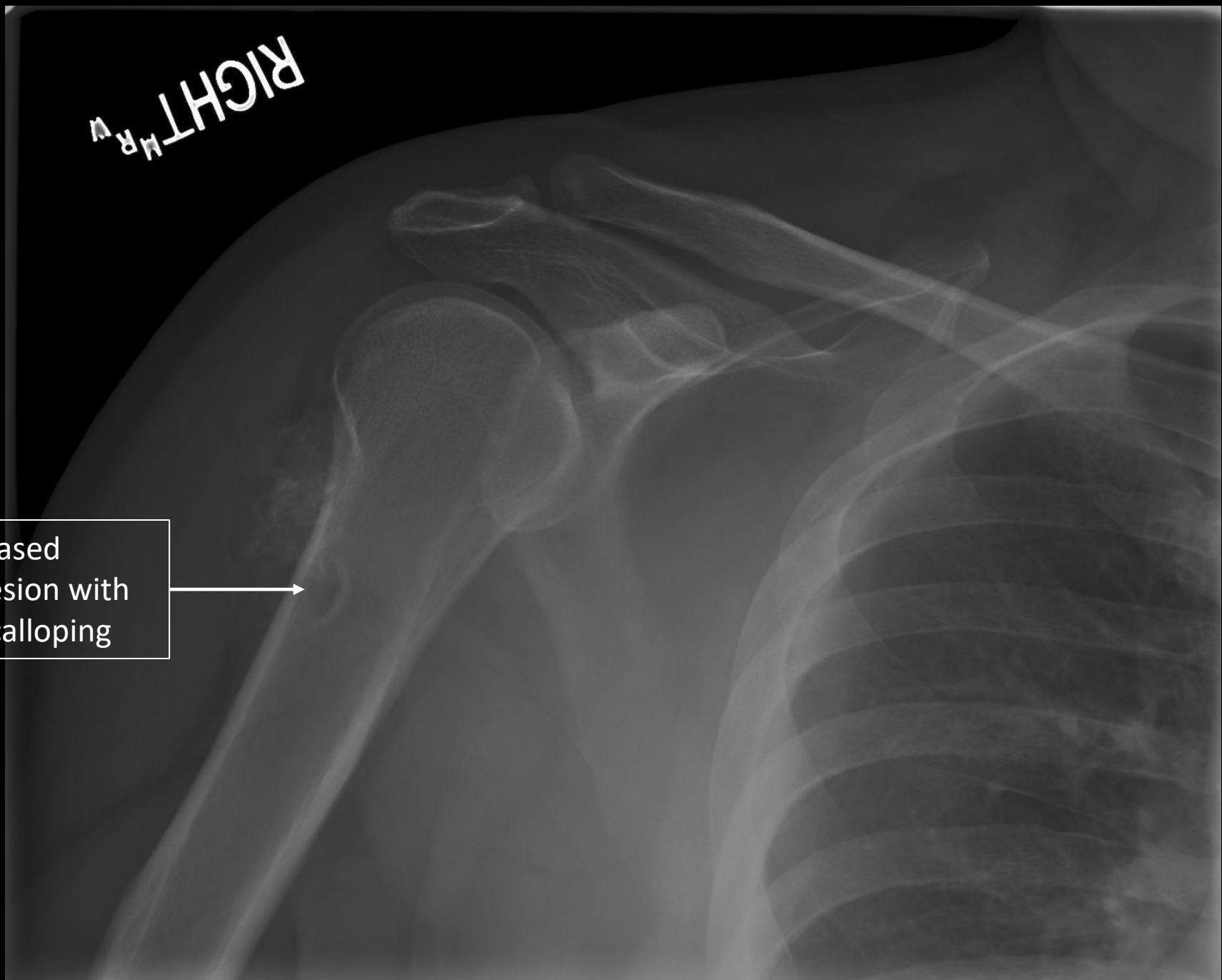


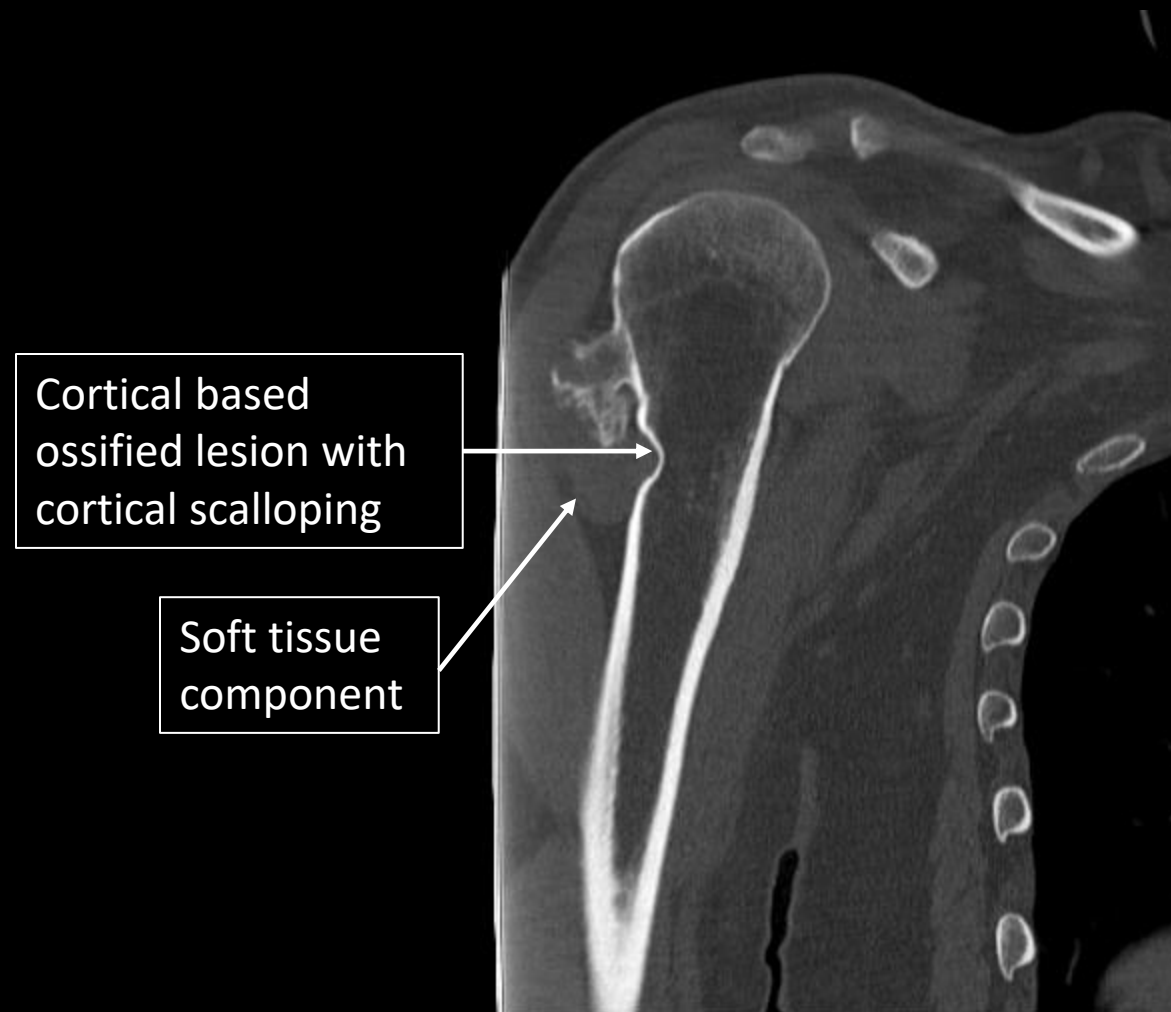
RIGHT
MR
V

Cortical based
ossified lesion with
cortical scalloping



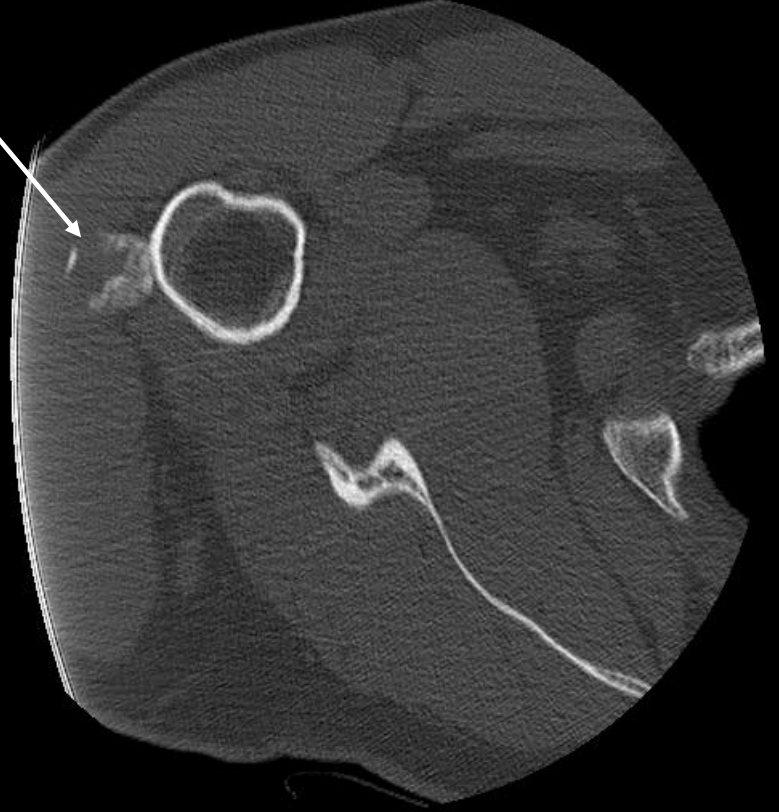
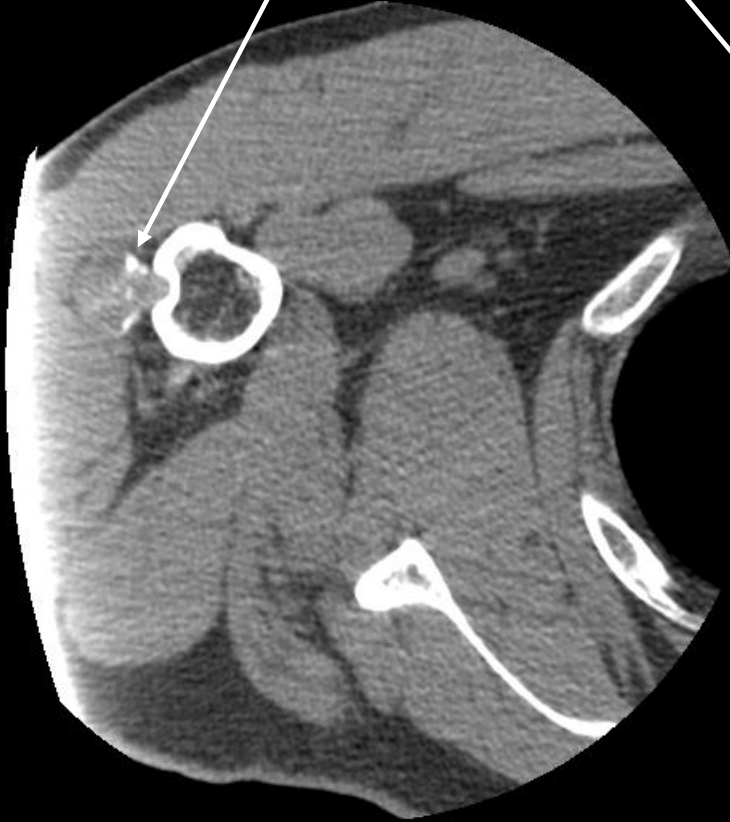
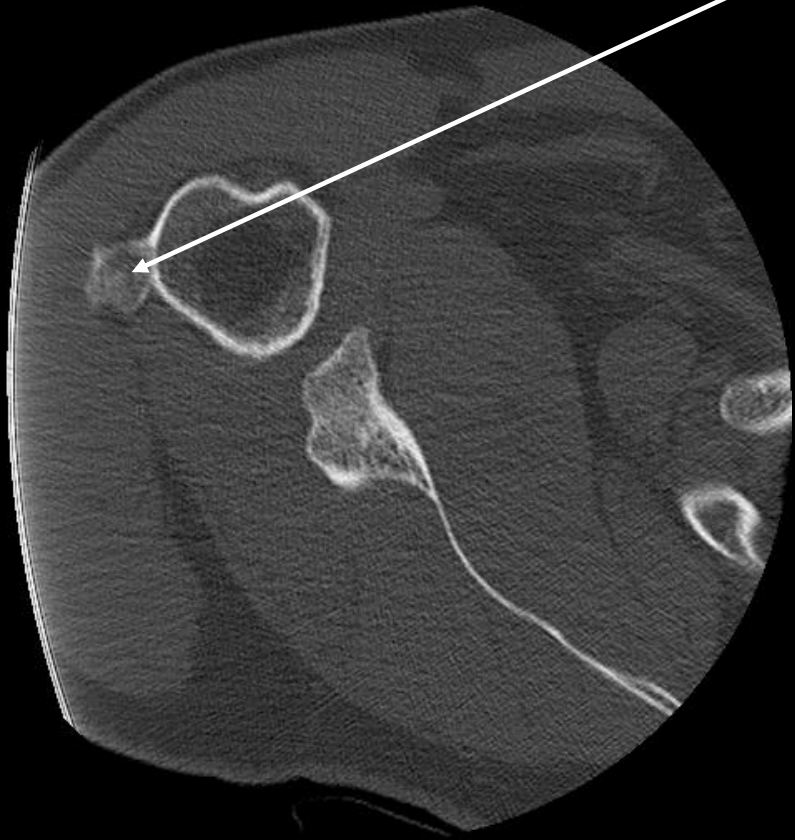
AP Radiograph





Coronal unenhanced CT

Cortical based
ossified lesion with
cortical scalloping



Axial unenhanced CT

Answer

Diagnosis – Juxtacortical chondroma

Juxta-cortical chondroma, previously designated as periosteal chondroma is a rare cartilaginous tumor originating from the periosteum. On conventional radiography, the lesion typically causes saucerization of the adjacent cortex with well-delineated sclerotic margins. Conventional radiography may be less accurate than cross-sectional imaging to demonstrate the precise extent of pressure erosion and bone and soft tissue extent. Although MRI is the imaging technique of choice for further preoperative evaluation, CT may be of additional value. Due to its high spatial resolution, CT may detect very tiny matrix calcifications and allows a more precise evaluation of the saucerized cortex at a low radiation dose.

The lesions typically appear in proximal humerus and distal femur (70%) or phalanges (25%). The symptoms are usually due to neurovascular impingement. Treated with surgical resection and local recurrence is extremely rare.